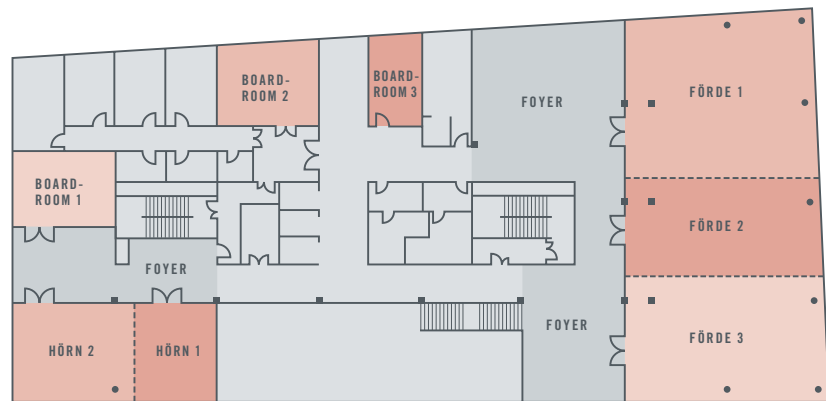


FUNCTION ROOMS

Our hotel's conference deck has eight air-conditioned function rooms equipped with the latest technology and with space for up to 500 people as well as spacious and bright foyers.

Particular highlights are the conference rooms with a view of the Kiel Fjord, the atmospheric wine cellar and DECK 8, the bar with a roof terrace and a panoramic view of Kiel.



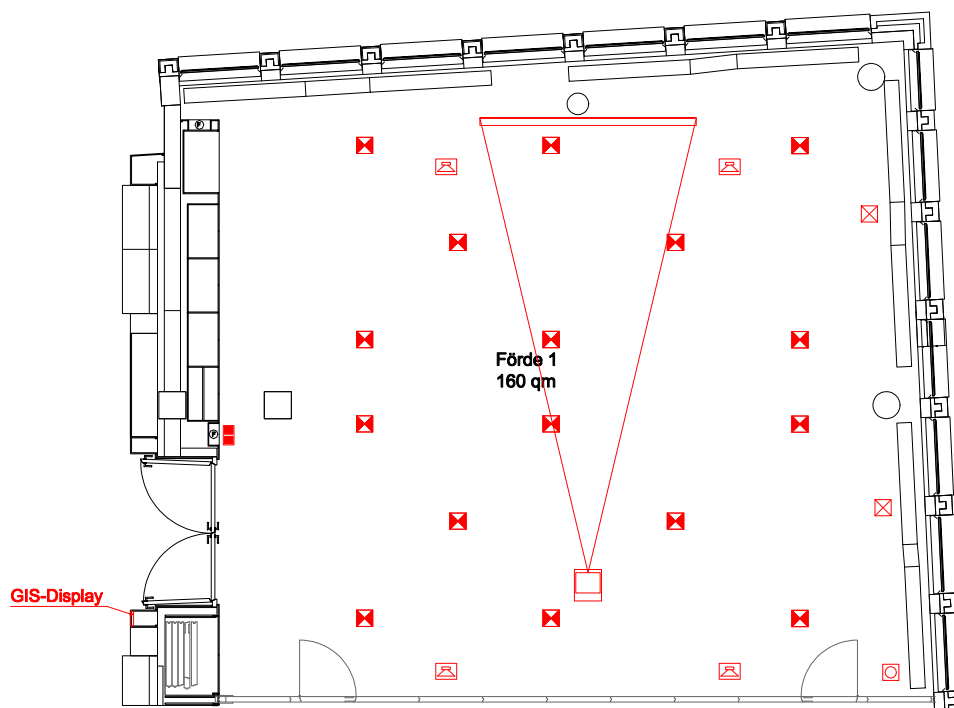
Capacities

	sqm	Maximum number of persons						Room dimensions		
								Length	Width	Height
Förde 1	160	145	95	40	110	48	130	13.30	12.00	3.20
Förde 2	100	100	60	36	70	42	85	13.50	7.20	3.20
Förde 3	125	120	75	36	80	48	105	14.00	9.00	3.20
Förde 1+2	260	270	145	60	200	72	220	13.40	19.20	3.20
Förde 2+3	225	215	130	50	180	65	190	13.80	16.20	3.20
Förde 1+2+3	385	400	250	80	280	95	330	13.60	28.40	3.20
Hörn 1	30	32	18	15	–	18	–	6.30	5.40	3.20
Hörn 2	60	60	35	24	40	30	–	9.20	6.30	3.20
Hörn 1+2	90	100	60	40	60	45	85	14.60	6.30	3.20
Boardroom 1	40	35	18	15	–	18	–	7.20	5.20	3.20
Boardroom 2	40	40	21	18	–	18	–	7.20	5.60	3.20
Boardroom 3	25	–	–	–	–	12	–	6.70	3.70	3.20

Visualizations

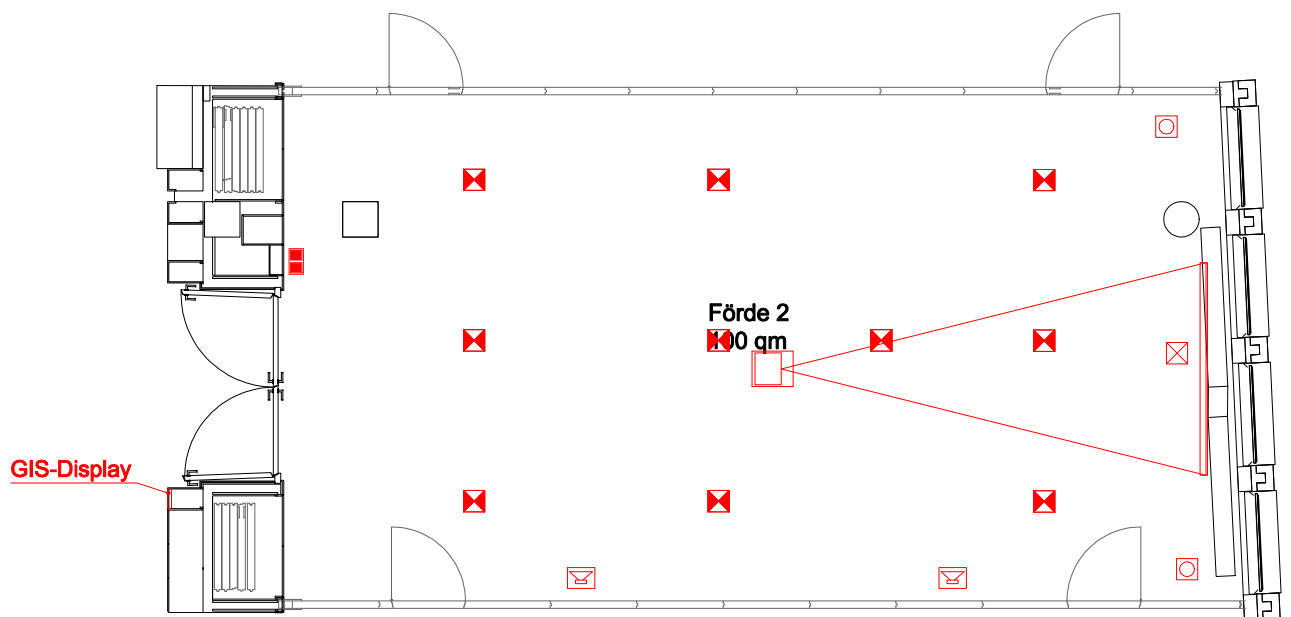
Here you can get an overview of the individual layout options of our function rooms:

Förde 1



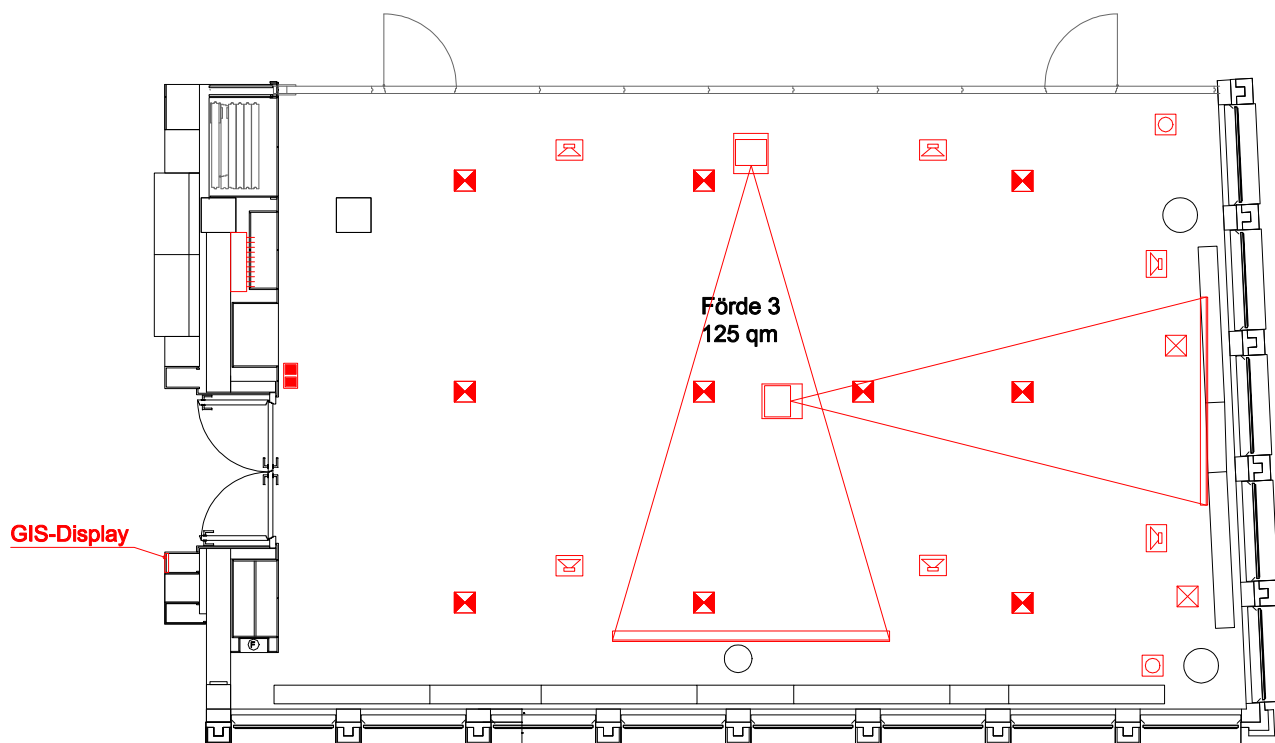
Daylight	✓
Air-conditioned	✓
To be darkened	✓
Accessible by car	-
Internet access	WLAN/LAN
Power connection	54 x 220 V / 2 x 16 A / 1 x 32 A
Projector	Integrated
TV connection	✓
Sound system	✓
Floor covering	Carpet
Location in hotel	1st floor with lift
Other features	View on the Kiel Fjord

Förde 2



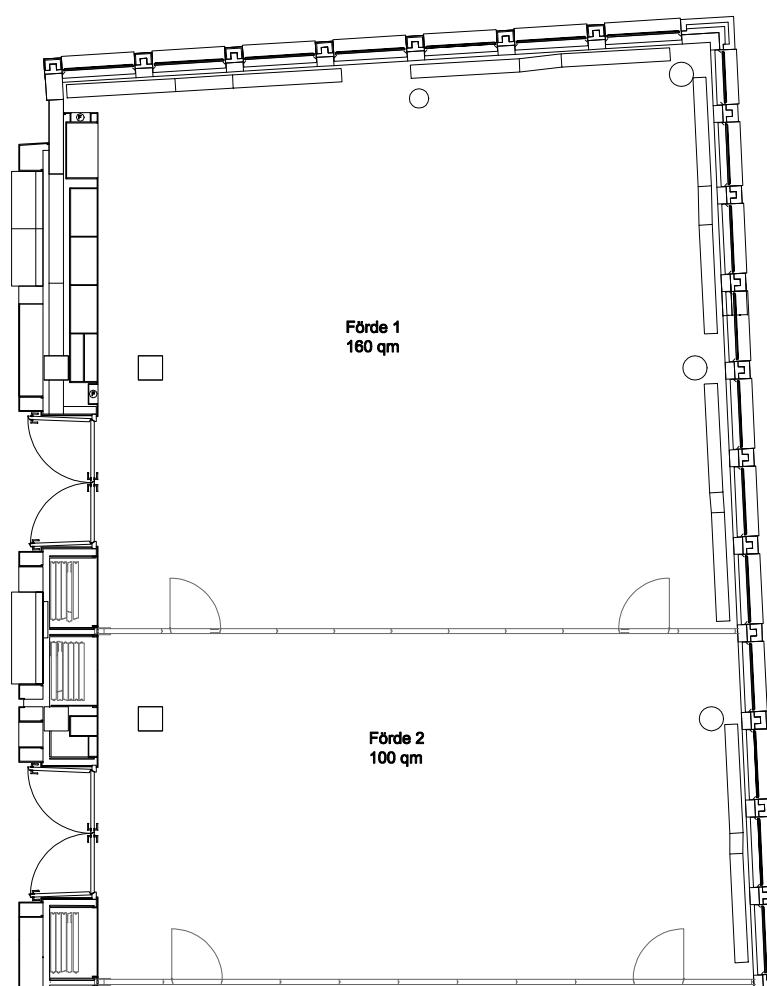
Daylight	✓
Air-conditioned	✓
To be darkened	✓
Accessible by car	-
Internet access	WLAN/LAN
Power connection	38 x 220 V / 2 x 16 A
Projector	Integrated
TV connection	✓
Sound system	-
Floor covering	Carpet
Location in hotel	1st floor with lift
Other features	View on the Kiel Fjord

Förde 3



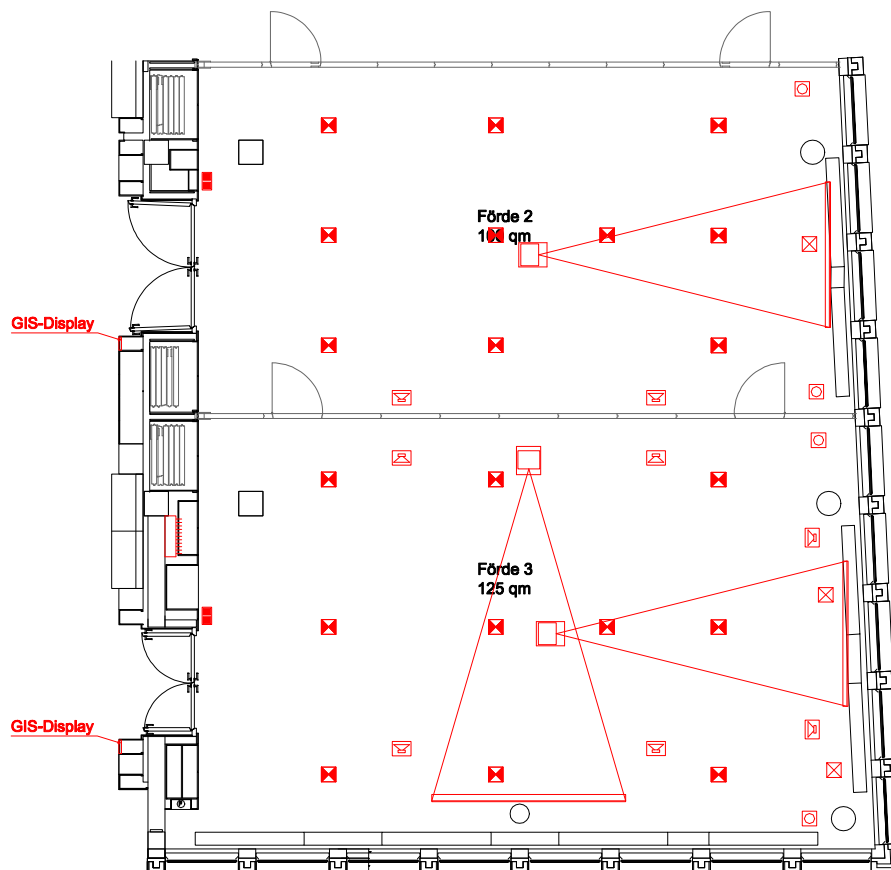
Daylight	✓
Air-conditioned	✓
To be darkened	✓
Accessible by car	-
Internet access	WLAN/LAN
Power connection	39 x 220 V / 2 x 16 A / 1 x 32 A
Projector	Integrated
TV connection	✓
Sound system	✓
Floor covering	Carpet
Location in hotel	1st floor with lift
Other features	View on the Kiel Fjord

Förde 1+2



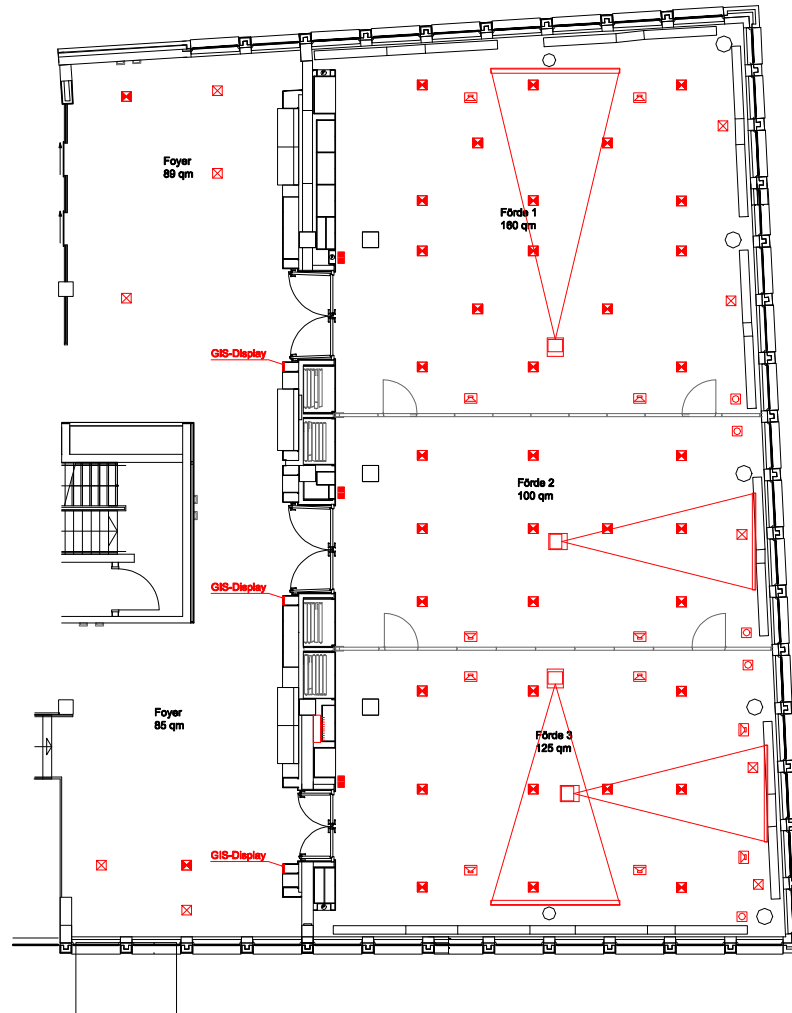
Daylight	✓
Air-conditioned	✓
To be darkened	✓
Accessible by car	-
Internet access	WLAN/LAN
Power connection	92 x 220 V / 4 x 16 A / 1 x 32 AA
Projector	Integrated
TV connection	✓
Sound system	✓
Floor covering	Carpet
Location in hotel	1st floor with lift
Other features	View on the Kiel Fjord

Förde 2 + 3

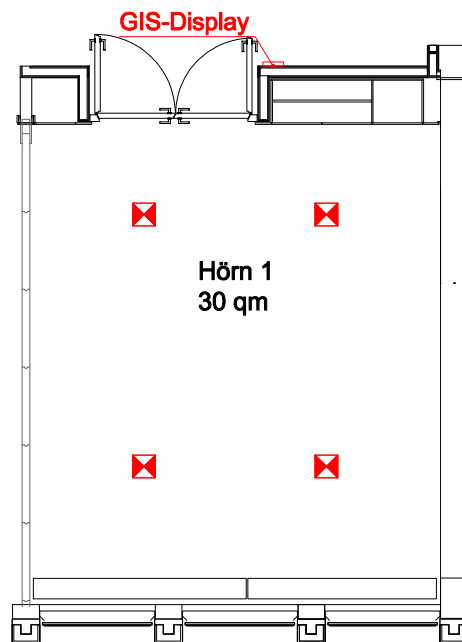


Daylight	✓
Air-conditioned	✓
To be darkened	✓
Accessible by car	-
Internet access	WLAN/LAN
Power connection	77 x 220 V / 4 x 16 A / 1 x 32 A
Projector	Integrated
TV connection	✓
Sound system	✓
Floor covering	Carpet
Location in hotel	1st floor with lift
Other features	View on the Kiel Fjord

Förde 1+2+3

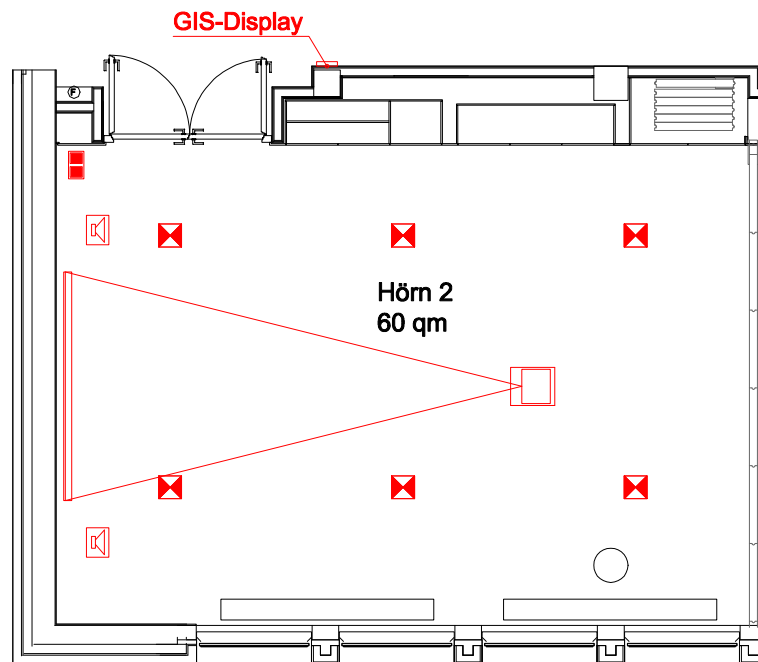


Daylight	✓
Air-conditioned	✓
To be darkened	✓
Accessible by car	-
Internet access	WLAN/LAN
Power connection	131 x 220 V / 3 x 16 A / 2 x 32 A
Projector	Integrated
TV connection	✓
Sound system	✓
Floor covering	Carpet
Location in hotel	1st floor with lift
Other features	View on the Kiel Fjord

Hörn 1

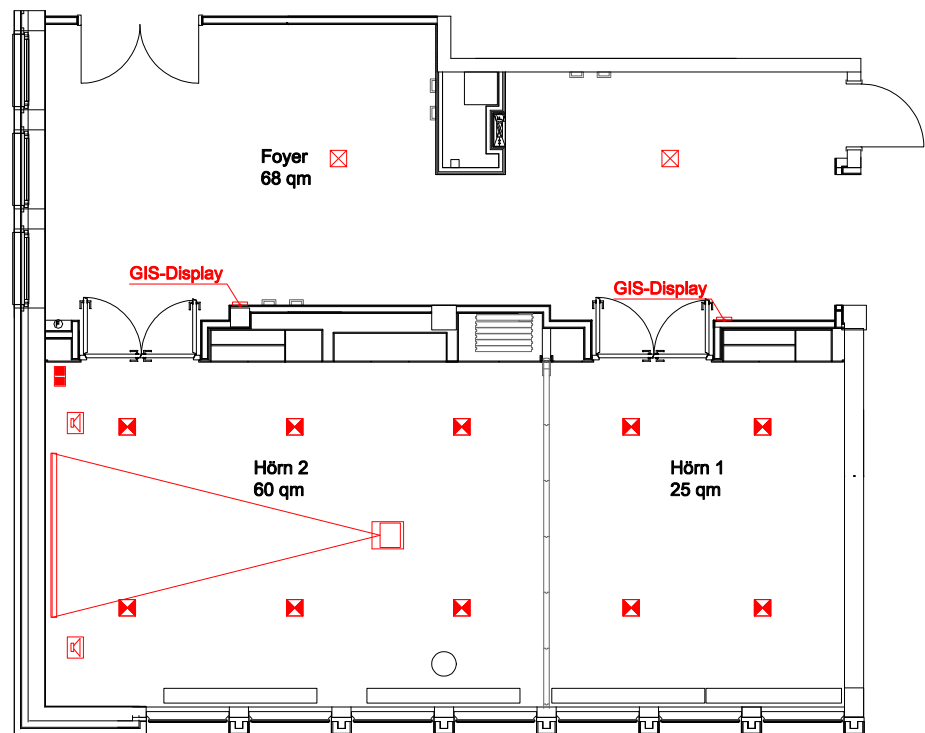
Daylight	✓
Air-conditioned	✓
To be darkened	✓
Accessible by car	-
Internet access	WLAN/LAN
Power connection	14 x 220 V / 1 x 16 A
Projector	Mobile
TV connection	✓
Sound system	-
Floor covering	Wood
Location in hotel	1st floor with lift
Other features	

Hörn 2

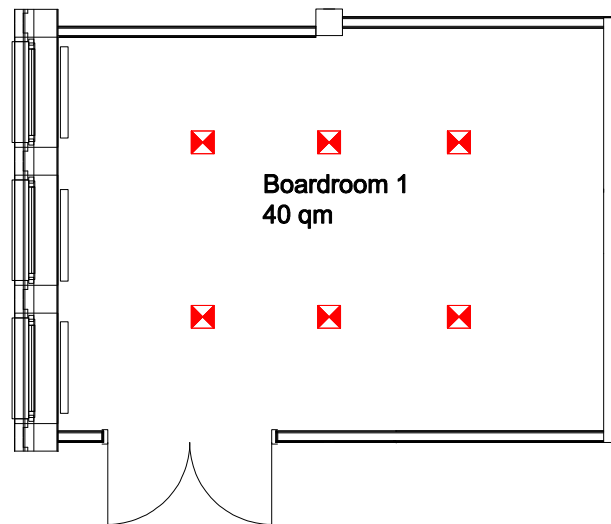


Daylight	✓
Air-conditioned	✓
To be darkened	✓
Accessible by car	-
Internet access	WLAN/LAN
Power connection	21 x 220 V
Projector	Integrated
TV connection	✓
Sound system	✓
Floor covering	Wood
Location in hotel	1st floor with lift
Other features	

Hörn 1+2

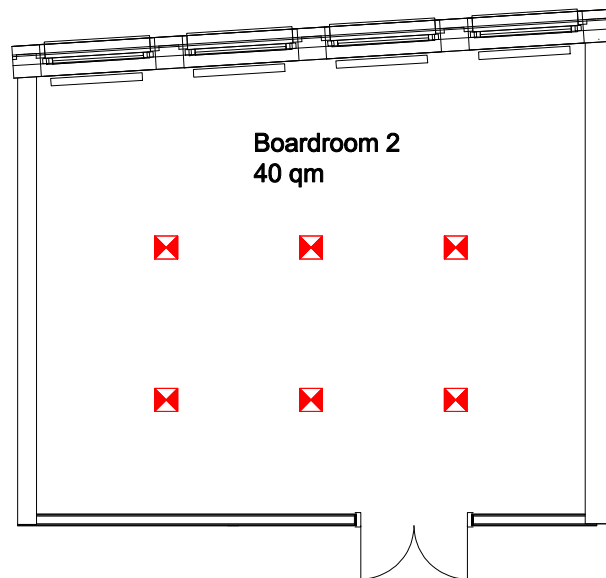


Daylight	✓
Air-conditioned	✓
To be darkened	✓
Accessible by car	-
Internet access	WLAN/LAN
Power connection	35 x 220 V / 1 x 16 A
Projector	Integrated
TV connection	✓
Sound system	✓
Floor covering	Wood
Location in hotel	1st floor with lift
Other features	

Boardroom 1

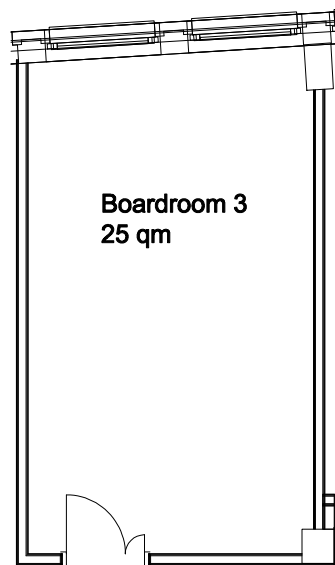
Daylight	✓
Air-conditioned	✓
To be darkened	✓
Accessible by car	-
Internet access	WLAN/LAN
Power connection	23 x 220 V
Projector	Mobile
TV connection	✓
Sound system	-
Floor covering	Carpet
Location in hotel	1st floor with lift
Other features	

Boardroom 2



Daylight	✓
Air-conditioned	✓
To be darkened	✓
Accessible by car	-
Internet access	WLAN/LAN
Power connection	23 x 220 V
Projector	Mobile
TV connection	✓
Sound system	-
Floor covering	Carpet
Location in hotel	1st floor with lift
Other features	

Boardroom 3



Daylight	✓
Air-conditioned	–
To be darkened	–
Accessible by car	–
Internet access	WLAN/LAN
Power connection	5 x 220 V
Projector	Mobile
TV connection	✓
Sound system	–
Floor covering	Carpet
Location in hotel	1st floor with lift
Other features	

ROOM COSTS

Transparency is one of the pillars of the ATLANTIC Hotels' SMART meetings & events concept.

	Room size in sqm	Set-up costs in EUR	Space costs in EUR	Room costs in EUR
Förde 1	160	550.00	3,400.00	1,400.00
Förde 2	100	350.00	2,200.00	900.00
Förde 3	125	400.00	2,900.00	1,200.00
Förde 1+2	260	900.00	5,600.00	2,300.00
Förde 2+3	225	750.00	5,100.00	2,100.00
Förde 1+2+3	385	1,300.00	8,500.00	3,500.00
Hörn 1	30	150.00	600.00	300.00
Hörn 2	60	200.00	1,400.00	550.00
Hörn 1+2	90	350.00	2,000.00	850.00
Boardroom 1	40	150.00	800.00	350.00
Boardroom 2	40	150.00	800.00	350.00
Boardroom 3	25	80.00	500.00	200.00

The set-up charge for the set-up of the room according to your wishes occur regardless of accommodation and catering revenue and will be charged once per event.

The space charges are minimum consumption with full revenue credits: The food and beverage revenue (also Conference Packages) reduces the space charges for the resulting total bill. If this revenue below the said sum, the difference is constituted as room rental fee. Billing will be made per day.

When booking additional rooms the room rental will be charged.