



SMART MEETINGS AT ATLANTIC HOTEL GALOPPRENNBAHN



ATLANTIC Hotel Galopprennbahn
Ludwig-Roselius-Allee 2 · 28329 Bremen
Tel. +49 (0)421 33 300-0
Fax +49 (0)421 33 300-500
rennbahn@atlantic-hotels.de

Event Sales Team
Tel. +49 (0)421 33 300-562 / -567
veranstaltung.ahg@atlantic-hotels.de

GREEN LIGHT FOR YOUR CONFERENCES

More space, more freedom!

In-house trade fairs, incentives, seminars, conferences and events for up to 1,200 people. We have the right setting for your requirements! The flexible design of our function rooms and the spacious external facilities of the Bremen racecourse offer space for a huge variety of possibilities.

Are you planning an in-house trade fair or a car presentation? Are you looking for somewhere to hold concentrated seminars or for an incentive in our exclusive beer garden / winter market? We look forward to bringing these ideas, as well as many others, to life together with you!

Innovative event formats and dynamic conferences round off our range of services. **Guaranteed different, guaranteed refreshing!**

Our offer at a glance

Are you looking for a suitable coffee break or do you need a supporting programme for the evening? Our conference folder provides detailed information on any queries you may have.

- Conference packages
- ATLANTIC Breaks
- Technology
- Conference menus
- Conference buffets
- Beverages
- Offers
- Room capacities
- Accompanying programmes
- Preferred partners
- Contacts

Still need more? Our Event Sales Team is happy to discuss your personal needs and prepare your very own event outline!

CONFERENCE PACKAGES

Everything taken care of

Besides our ATLANTIC Breaks and energy-boosting lunch buffets, our conference packages also provide the technology and equipment that you need for your event. We look forward to helping you prepare an individual arrangement to suit your needs.

All prices are per person and incl. applicable VAT.

Classic conference package (full-day)

- Two coffee breaks with: Filter coffee, an ALTHAUS tea selection and a refreshing or sweet snack with 3 components (you can find the selection under COFFEE BREAKS)
- On the house: An additional cold beverage with the coffee break in the afternoon (e.g. DIY smoothies, home-made ice teas, milkshakes or buttermilk)
- Lunch as a seasonal 3-course menu or a lunch buffet as recommended by the chef (depending on the number of people)
- 2 x 0.2 l non-alcoholic conference drinks per person in the function room
- Standard technology: 1 LCD projector, 1 projector screen, 1 flipchart and 1 pin board
- Pads and pens in the room

€ 57.00 per person/day

€ 64.00 per person/day incl. unlimited non-alcoholic conference drinks in the function room
(soft drinks 0.2 l / mineral water 0.75 l per bottle)

Large conference package (full-day)

- Two coffee breaks with: Filter coffee, an ALTHAUS tea selection and a refreshing or sweet snack with 3 components (you can find the selection under COFFEE BREAKS)
- On the house: An additional cold beverage with the coffee break in the afternoon (e.g. DIY smoothies, home-made ice teas, milkshakes or buttermilk)
- Lunch as a seasonal 3-course menu or a lunch buffet as recommended by the chef (depending on the number of people)
- 2 x 0.2 l non-alcoholic conference drinks per person in the function room
- Standard technology: 1 LCD projector, 1 projector screen, 1 flipchart and 1 pin board
- Pads and pens in the room
- Dinner as a seasonal 3-course menu or a dinner buffet as recommended by the chef (depending on the number of people)

€ 79.90 per person/day

€ 87.00 per person/day incl. unlimited non-alcoholic conference drinks in the function room
(soft drinks 0.2 l / mineral water 0.75 l per bottle)

VITALITY MEETINGS +

Designed for the course of a busy conference day and the natural human performance curve, our “vitality” range of services provides a natural basis for successful seminars and events. Classic fitness and pick-me-ups combined with modern trends ensure active well-being for your guests. Healthy meetings – a benefit for your employee fitness.

Right in the middle of greenery and yet centrally located, you will find the optimal basis for a positive meeting: tranquillity, views of the countryside, healthy food and modern rooms. Absolutely vitalizing and completely aligned with the philosophy of work-life balance.

- Modern function room with a view into the green
- Vitality Break in the morning: filter coffee, ALTHAUS tea selection, fruit juice and healthy smoothies
- Vitalizing snacks consisting of 3 components (a choice from e.g. make-your-own pancakes, vegetable sticks, Bircher muesli and wholemeal avocado toast)
- Vitality Quick Lunch as a stand-up snack, as recommended by the chef:
Soup, tomato rocket salad with mozzarella & olives, grilled vegetable skewers with chicken breasts and prawns, cucumber appetizers with smoked salmon, honeydew melon with serrano ham, juicy steaks from the grill, low-carb dessert and fresh fruit.
- Vitamin power in the afternoon: the berry break with fresh berries, low-fat and protein-rich skyr, berry drinks and of course fruity gummy bears. Additionally: filter coffee, tea and juices.
- Unlimited conference beverages in the function room: Ginger water, mineral water and coffee specialities.
- Standard technology: 1 LCD projector, 1 projector screen, 1 flipchart and 1 pin board
- Pads and pens in the room
- High-speed WiFi

€ 75.00 per person/day (bookable from 6 persons, on request and subject to availability)

Optional:

We cooperate with certified personal trainers and offer, for example, short yo-ga sessions. Tip: Use the racecourse as a running track and reach your “10,000 steps a day” target even on conference days.

Can't find the conference package that you're looking for? We can also prepare customized conference packages that meet your individual needs and reflect your event profile. Our Event Sales Team is happy to assist you.

COFFEE BREAKS

ATLANTIC Break

A short break with a big impact! Enjoy your conference breaks in our bright foyers, on the terraces or amidst the greenery. Network with coffee and tea, fresh, fruity or savoury treats from our kitchen as well as a small surprise on the house. A Tipp-Kick and other games provide a light-hearted alternative during our ATLANTIC Breaks.

All prices are per person and incl. applicable VAT.

Our “classic” or “large” conference packages include the following for each coffee break:

- Filter coffee and an ALTHAUS tea selection
- A cold drink on the house, such as:
Home-made ice teas, fruit spritzers and milkshakes or buttermilk
- A **snack** with 3 components for selection, such as:
Fit and Vital, e.g. yoghurt, muesli bars and vegetable sticks / Rustic, e.g. mini meatballs and cornichons, half-rolls with hearty toppings

Choose your own personal selection or be inspired by our recommendations. We would be delighted to discuss the diversity of our ATLANTIC Breaks in a personal meeting to prepare an offer to suit your specific needs.

- Recommendation (morning): Mini apple pastry, mini jam croissant
- Recommendation (afternoon): Mini crêpe with nou-gat cream, currant yoghurt slices

Complement your ATLANTIC Break with these attractive components:

Your energy station in the conference room

- Red Bull in small cans for € 3.90 (0.25 l) per can
- Juice spritzers in different flavours such as cranberry, passion fruit & grape, rhubarb or apple for € 2.70 – € 2.90 per glass (0.2 l)
- Fruit basket with a variety of small fruit for € 2.50 per person
- Actimel yoghurt for € 1.50 per item
- Trail mix for € 2.80 per person
- Toblerone Mix for € 2.00 per person

Choc-o-lait on a stick

- Choc-o-lait Milk, Choc-o-lait Dark, Choc-o-lait Hazelnut, Choc-o-lait Caramel, Choc-o-lait Coffee (a premium hot chocolate that is mixed into hot milk with a stick) for € 2.70 per person

Nibbles at the bar table

- Salty nibbles (e.g. peanuts, pretzel sticks), pepperoni sausages or Grissini sticks for € 1.90 per person (please select 1 variety)
- Selection of colourful popcorn for € 2.50 per person

SMART meets MINI

- Mini donuts for € 2.50 per person (2 pieces per person)
- Variety of MINIs: e.g. éclairs, muffins or profiteroles for € 3.50 per person (2 pieces per person)
- Mini pancakes freshly prepared by our pancake machine for € 3.50 per person (2 pieces per person)

Sweet snacks for the cake break

- Mini chocolate vanilla twister for € 2.50 per person (2 pieces per person)
- Cupcakes for € 3.50 per person (1 piece per person)
- Pineapple grape skewer for € 3.50 per person (1 piece per person)
- Mini macarons for € 3.50 per person (2 pieces per person)

Savoury snacks for in-between

- Mini quiche for € 2.50 per person (2 pieces per person)
- Soft pretzels or cheese pretzels for € 2.70 per person (1 piece per person)
- Sandwiches, rolls or mini potato rolls with dip for € 2.70 per person (1 piece per person)
- Curried sausage in a glass for € 2.50 per person (1 piece per person)
- Mini cheeseburger for € 4.50 per person (2 pieces per person)
- Minestrone for € 4.50 per person (1 plate per person)

SMART start to the day

- Coffee specialities (up to max. 30 people) for € 3.50 per person
- Filter coffee and an ALTHAUS tea selection for € 3.50 per person
- Filled rolls and pastries for € 6.00 per person
- Mini croissant and muesli with yoghurt in small glasses for € 5.00 per person

CONFERENCE TECHNOLOGY

Our conference and function rooms are equipped with modern conference and media technology installed in the ceilings. A projector, a projector screen, a pin board and a flipchart are already included in all the packages.

Choose your own additional equipment:

P.A. equipment * incl. a wireless hand-held or clip microphone	€ 120.00	per day
additional microphones:	€ 75.00	per item/day
- wireless hand-held microphone		
- clip microphone		
<i>* Our home sound system is compatible for the usage of up to two microphones at the same time. With the simultaneous usage of three microphones or more we recommend the leasing by an external service provider.</i>		
Flipchart incl. 20 sheets and 4 pens	€ 19.00	per item/day
Flipchart paper	€ 1.00	per sheet
Transparency copies	€ 1.50	per copy
Photocopies	€ 0.30	per copy
	€ 0.20	over 100 copies
Projector screen		
- installed in the room		free of charge
- mobile	€ 45.00	per item/day
Facilitator's toolbox	€ 35.00	per item/day
Overhead projector 400 Watt	€ 35.00	per item/day
Projector	€ 120.00	per item/day
Pin board	€ 12.00	per item/day
Lectern	€ 75.00	per item/day
Dance floor 25 sqm	€ 400.00	per day
Technical assistance	€ 38.00	per employee/hour
Telephone connection		
- Set-up	€ 35.00	one-off
- Units	€ 0.30	per item
Flat screen TV	€ 150.00	per item/day

Can't find the technology that you're looking for? We will gladly ask our technology partners to provide more equipment for you!

CONFERENCE MENUS

Generally our conference packages already include lunch for your seminar participants.

Stay for dinner and select an individual menu from our suggestions or be inspired by our seasonal recommendations.

All prices are per person and incl. applicable VAT.

For example ...

Menu 1

Parsley root crème with prawn tartare

* * *

Crispy zander with caper sauce,
parsnips and thyme risotto

* * *

Tiramisu

€ 32.50

Menu 2

Scallops with caviar on beetroot with saffron crème

* * *

Veal steak with pepper cuvée sauce,
vanilla carrots and rosemary potato gratin

* * *

Crème caramel with pistachio ice cream

€ 39.90

CONFERENCE BUFFETS

Something for everyone

Buffets are the perfect alternative to the classic menu and offer a selection of starters, main courses and desserts, freshly and creatively prepared especially for you by our kitchen team from the DERBY restaurant.

Try our chef's recommendations or select a buffet that meets your needs! For further buffet suggestions please contact our Event Sales Team.

All prices are per person and incl. applicable VAT.

Rustic barbecue buffet

Leaf salad with various dressings and toppings

Potato cucumber salad with mustard vinaigrette

Tomato salad with red onions

Pasta salad with rocket and pine nuts

* * *

Marinated pork neck steak

Chicken breast in orange pepper marinade

Grilled sausage

Escolar with herbs

Potato wedges and sour cream

Corn on the cob and marinated grilled vegetables

Ketchup, mustard, aioli, BBQ sauce, sweet & sour sauce, tzatziki

* * *

Red-berry compote with vanilla sauce

Mousse au chocolat with mango ragout

per person € 29.50

BEVERAGES

An individual selection of beverages perfect for every occasion. Select from a range of non-alcoholic drinks or browse through our world of wine. We will adapt our offer to your wishes.

Cold non-alcoholic beverages

Coca Cola	0.20 l	€ 3.20
Coca Cola light	0.20 l	€ 3.20
Coca Cola zero	0.20 l	€ 3.20
Fanta	0.20 l	€ 3.20
Sprite	0.20 l	€ 3.20
Mezzo Mix	0.20 l	€ 3.20
Red Bull	0.25 l	€ 4.50
Schweppes Tonic Water	0.20 l	€ 3.20
Schweppes Bitter Lemon	0.20 l	€ 3.20
Schweppes Ginger Ale	0.20 l	€ 3.20
Schweppes Soda Water	0.20 l	€ 3.20
Schweppes Ginger Beer	0.20 l	€ 3.20
Schweppes Wild berries	0.20 l	€ 3.20
Thomas Henry Tonic Water	0.20 l	€ 3.50
Thomas Henry Bitter Lemon	0.20 l	€ 3.50
Thomas Henry Ginger Ale	0.20 l	€ 3.50
Thomas Henry Spicy Ginger	0.20 l	€ 3.50
Magnus mineral water	0.25 l	€ 3.00
Magnus mineral water	0.75 l	€ 6.90
Magnus still water	0.25 l	€ 3.00
Magnus still water	0.75 l	€ 6.90
Niehoff's apple juice	0.20 l	€ 3.20
Niehoff's orange juice	0.20 l	€ 3.20
Niehoff's red grape juice	0.20 l	€ 3.20
Niehoff's tomato juice	0.20 l	€ 3.20
Niehoff's pineapple juice	0.20 l	€ 3.20
Niehoff's grapefruit juice	0.20 l	€ 3.20
Niehoff's cherry nectar	0.20 l	€ 3.20
Niehoff's banana nectar	0.20 l	€ 3.20
Niehoff's passion fruit nectar	0.20 l	€ 3.20
Niehoff's currant nectar	0.20 l	€ 3.20
Niehoff's cranberry Nektar	0.20 l	€ 3.20
Niehoff's cherry banana nectar	0.20 l	€ 3.20
Niehoff's multivitamin juice	0.20 l	€ 3.20

Niehoff fruit spritzers

Clear apple spritzer	0.33 l	€ 4.50
Grape passion fruit spritzer	0.33 l	€ 5.00
Rhurbarb spritzer	0.33 l	€ 5.00
Paloma	0.355 l	€ 4.50

Beer

Beck's on draught	0.25 l	€ 3.20
Beck's on draught	0.40 l	€ 4.80
Alster (beer and lemonade)	0.25 l	€ 3.20
Alster (beer and lemonade)	0.40 l	€ 4.80
Haake-Beck Kräusen Pils on draught	0.30 l	€ 3.60
Haake-Beck Kräusen Pils on draught	0.50 l	€ 5.20
Franziskaner wheat beer light on draught	0.30 l	€ 3.60
Franziskaner wheat beer light on draught	0.50 l	€ 5.20
Leffe Brune 6.5 %	0.15 l	€ 2.90
Leffe Brune 6.5 %	0.25 l	€ 3.80
Beck's Gold	Bottle 0.33 l	€ 3.50
Beck's Green Lemon	Bottle 0.33 l	€ 3.50
Beck's non-alcoholic	Bottle 0.33 l	€ 3.50
Franziskaner wheat beer dark	Bottle 0.50 l	€ 5.20
Franziskaner wheat beer crystal	Bottle 0.50 l	€ 5.20
Franziskaner wheat beer non-alcoholic	Bottle 0.33 l	€ 3.30
Franziskaner wheat beer non-alcoholic	Bottle 0.50 l	€ 5.20
Corona	Bottle 0.355 l	€ 4.80
Vitamalz	Bottle 0.33 l	€ 3.50

Coffee / Tea

Cup of coffee	€ 2.80
Cup of coffee decaf	€ 2.80
Cappuccino	€ 3.20
Espresso	€ 2.70
Double Espresso	€ 4.20
Espresso macchiato	€ 2.70
Café au lait	€ 3.60
Latte macchiato	€ 3.60
Hot chocolate	€ 3.50
ALTHAUS tea specialities (small pot)	€ 4,60
<i>Please ask our staff for the variety of flavours.</i>	

The ATLANTIC Wineworld offers a wide selection of wines from all over the world in all our hotels of the ATLANTIC Group.

In the Wineworld you will find wines by the glass and wines by the bottle.



White wine

Germany

Pinot blanc QbA	0.20 l	€ 6.50
Winery Karl Pfaffmann, Palatinate	0.75 l	€ 24.00
„Grohsartig“ QbA	0.20 l	€ 6.00
Winery Groh, Rhinehessen	0.75 l	€ 22.00
Pinot gris BIO QbA	0.20 l	€ 10.00
Winery Wittmann, Rhinehessen	0.75 l	€ 35.00
Riesling BIO QbA	0.20 l	€ 9.00
Winery Wittmann, Rhinehessen	0.75 l	€ 32.00
Pinot blanc QbA	0.75 l	€ 49.00
Winery Friedrich Becker, Palatinate & Alsace		

Austria

Grüner Veltliner BIO D.A.C	0.20 l	€ 9.50
Winery Loimer, Kamptal	0.75 l	€ 34.00

Italy

Chardonnay Simboli DOC	0.20 l	€ 7.00
Winery Cantina La Vis, Trentino	0.75 l	€ 26.00
Roero Arneis DOSCG	0.75 l	€ 52.00
Winery Bruno Giacosa, Piedmont		

France

Sancerre Blanc Le Tournebride Bio, AOC	0.75 l	€ 52.00
Winery Vincent Gaudry, Sancerre		

South Africa

Kleine Rust	0.20 l	€ 6.50
Stellenrust Winery, Stellenbosch	0.75 l	€ 24.00

New Zealand

Sauvignon Blanc	0,75 l	€ 45,00
Winery Mount Nelson, Marlborough		

Rosé**France**

Aix Rosé	0.20 l	€ 9.50
Winery Saint Aix, Provence, Aix	0.75 l	€ 34.00

Red wine**Germany**

Pinot noir QbA	0.20 l	€ 8.00
Winery Karl Pfaffmann, Palatinate	0.75 l	€ 28.00

Ursprung	0.20 l	€ 10.00
Winery Markus Schneider, Palatinate	0.75 l	€ 35.00

Pinot Noir „B“, QbA	0.75 l	€ 48.00
Winery Friedrich Becker, Palatinate & Alsace		

Italy

Chianti Colli Senesi Farnetella	0.20 l	€ 9.00
Winery Felsina, Tuscany	0.75 l	€ 32.00

Langhe Nebbiolo Perbacco, DOCG	0.75 l	€ 48.00
Winery Vietti, Piedmont		

France

Château Les Rosiers	0.20 l	€ 7.00
Winery Les Rosiers, Bordeaux	0.75 l	€ 26.00

Saint-Émilion Grand Cru	0.75 l	€ 63.00
Winery Château Valade, Bordeaux, Saint-Émilion		

Spain

Altos Ibéricos Rioja DOCa	0,20 l	€ 8.00
Winery Miguel Torres, Rioja	0.75 l	€ 28.00
Lindes De Remelluri, DOCa	0.75 l	€ 41.00
Winery Bodegas Remelluri, Rioja Alavesa		

Australia

Stickleback Red	0.20 l	€ 8.00
Heartland Wines, Langhorne Creek	0.75 l	€ 28.00
Directors' Cut Shiraz	0.75 l	€ 61,00
Heartland Wines, Langhorne Creek		

South Africa

Jan Fiskaal Merlot	0.20 l	€ 5.50
MAN Family Wines, Coastal Region	0.75 l	€ 20.50

Sparkling wine**Germany**

ATLANTIC Sparkling wine extra dry	0.10 l	€ 4.50
Schloss Affaltrach, Baden-Württemberg	0.75 l	€ 27.50

CO₂-CALCULATOR

The climate balance of your event

With atmosfair you can calculate the climate impact of your event. If you wish, you can then make a voluntary contribution to climate protection. atmosfair offsets your CO₂ emissions through its UN-certified offset projects. atmosfair provides you with a CO₂ offset certificate, which can be displayed during the event or distributed to participants.



Within the CO₂-calculator hotel data as usable area, energy consumption values, yearly heating requirement, function rooms, packages etc. are already provided, so that CO₂ emissions can exactly be calculated.

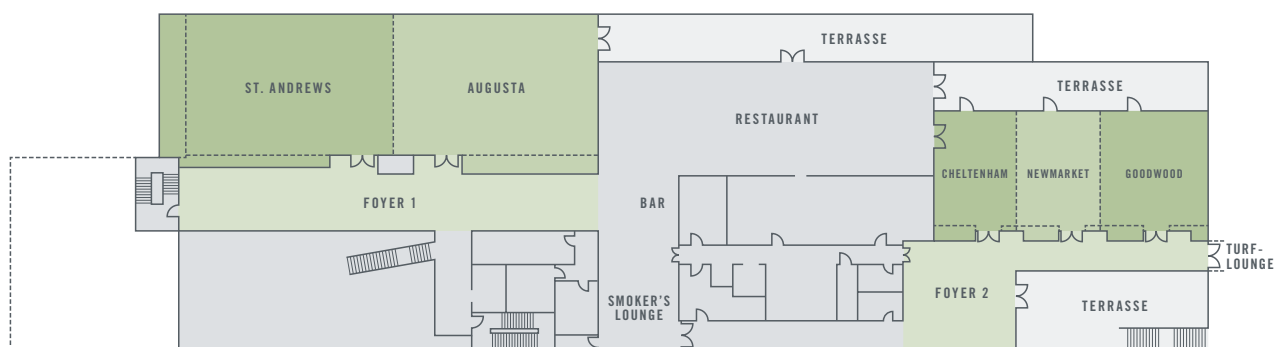
CO₂-calculator by ATLANTIC Hotels

You can make use of the CO₂-calculator on www.smart-tagen-und-feiern.de

FUNCTION ROOMS

Capacities

The ATLANTIC Hotel an der Galopprennbahn has 11 conference rooms. The largest conference room is 425 sqm in size and can accommodate up to 460 people. All rooms are bathed in natural light by the floor-to-ceiling windows facing the racecourse but can be entirely blacked-out if required. The latest technology is integrated into all the rooms.

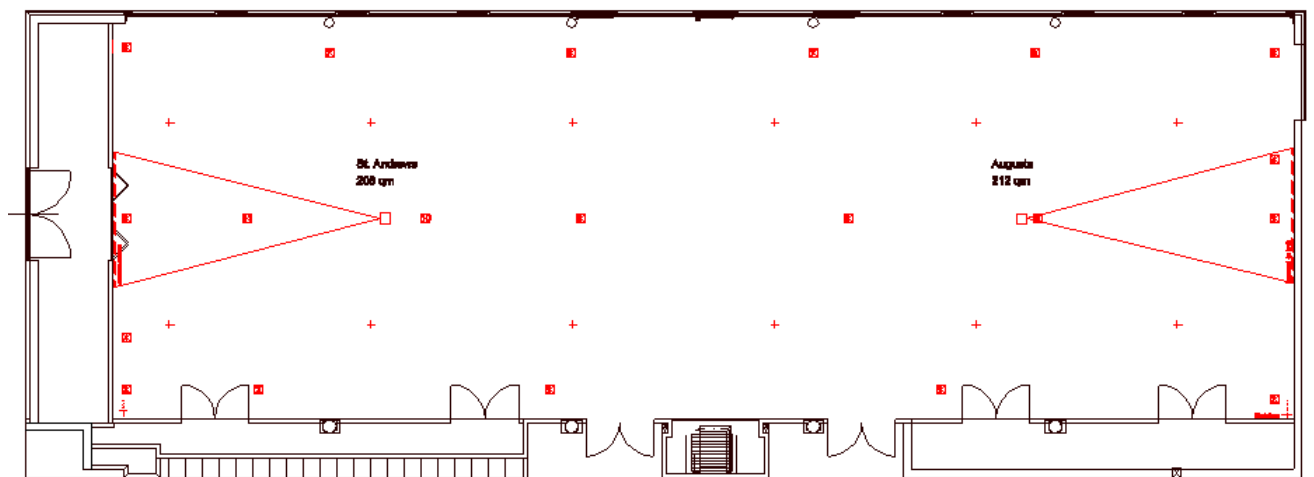


	sqm	Maximum number of persons						Room dimensions		
								Length	Width	Height
Saal 1	425	460	240	80	300	/	500	35.50	12.05	3.75
- St. Andrews	210	225	120	60	150	40	200	17.45	12.05	3.75
- Augusta	215	225	120	60	150	40	200	17.75	12.05	3.75
Foyer 1	170	/	/	/	/	/	200			
Saal 2	230	170	100	60	160	40	250	23.40	9.50	3.50
- Cheltenham	70	50	30	18	50	20	70	7.20	9.50	3.50
- Newmarket	70	50	30	18	50	20	70	7.20	9.50	3.50
- Goodwood	90	60	40	20	60	25	90	9.10	9.50	3.50
Foyer 2	150	/	/	/	/	/	150			
5 Conference studios, each	30	/	/	/	/	8	/			
Turf-Lounge	440	400	100	40	300	40	475	40.90	9.80	3.30
Turf-Balkon	140	/	/	/	/	/	/			

Visualizations

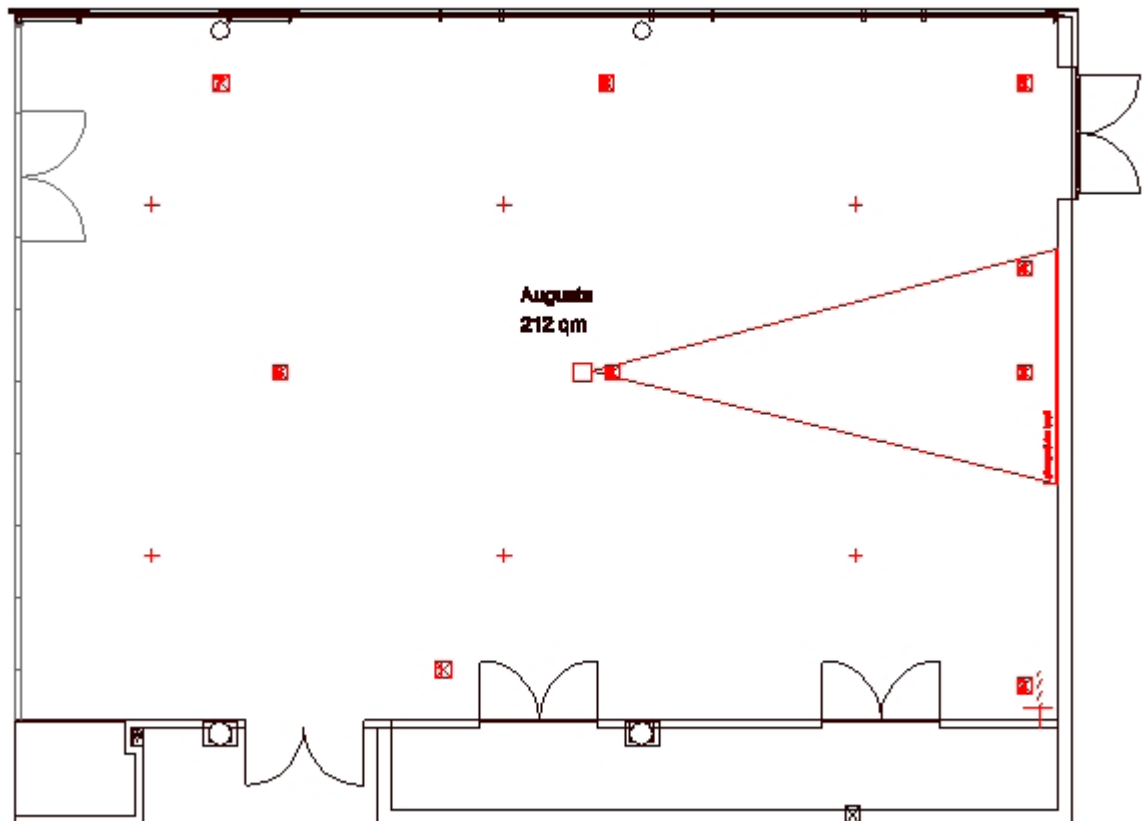
Here you can get an overview of the individual layout options of our function rooms:

Saal 1+2 (Augusta + St. Andrews)



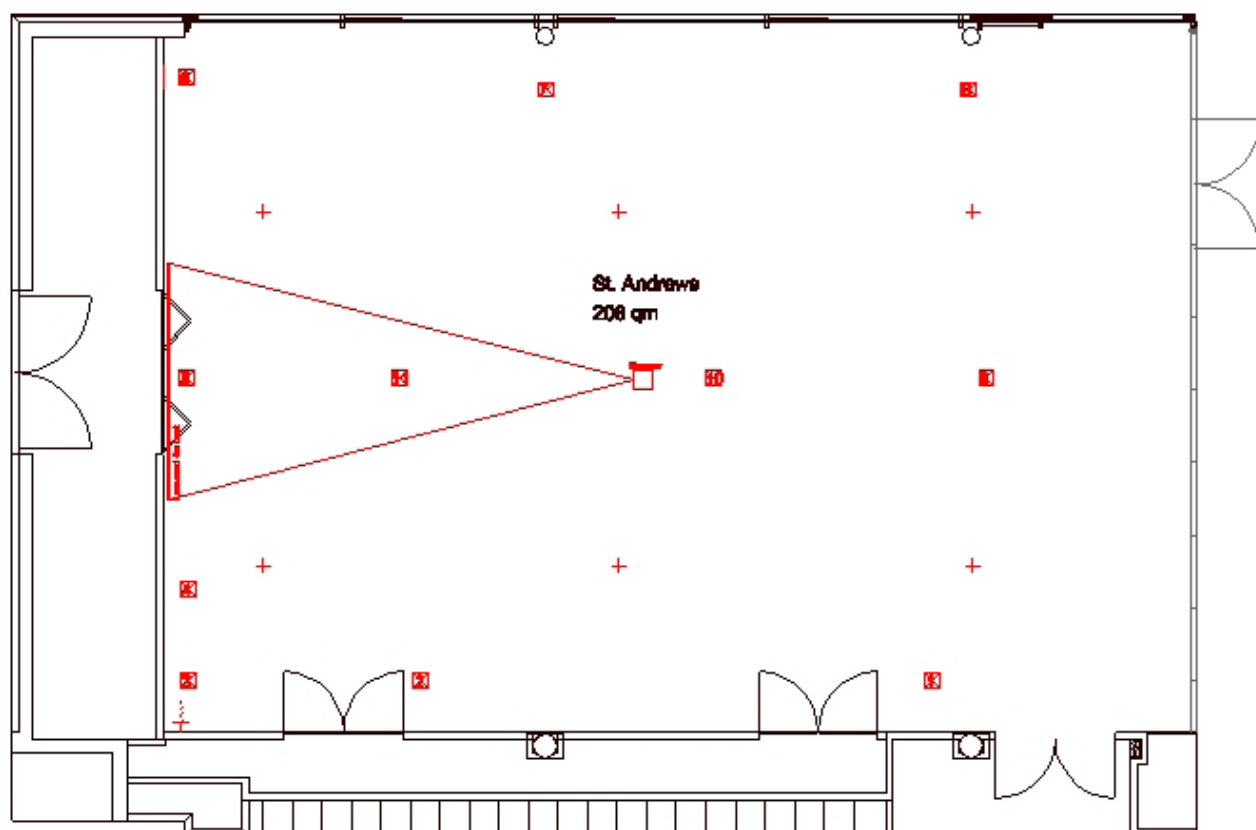
Daylight	x
Air-conditioned	x
To be darkened	x
Accessible by car	x
Internet access	WLAN/LAN
Power connection	220 V / 16 A
Projector	Integrated
TV connection	x
Sound system	x
Floor covering	Carpet
Location in hotel	1st floor with goods lift
Other features	Motor vehicle lift, terrace, floor-to-ceiling windows

Augusta (Saal 1)



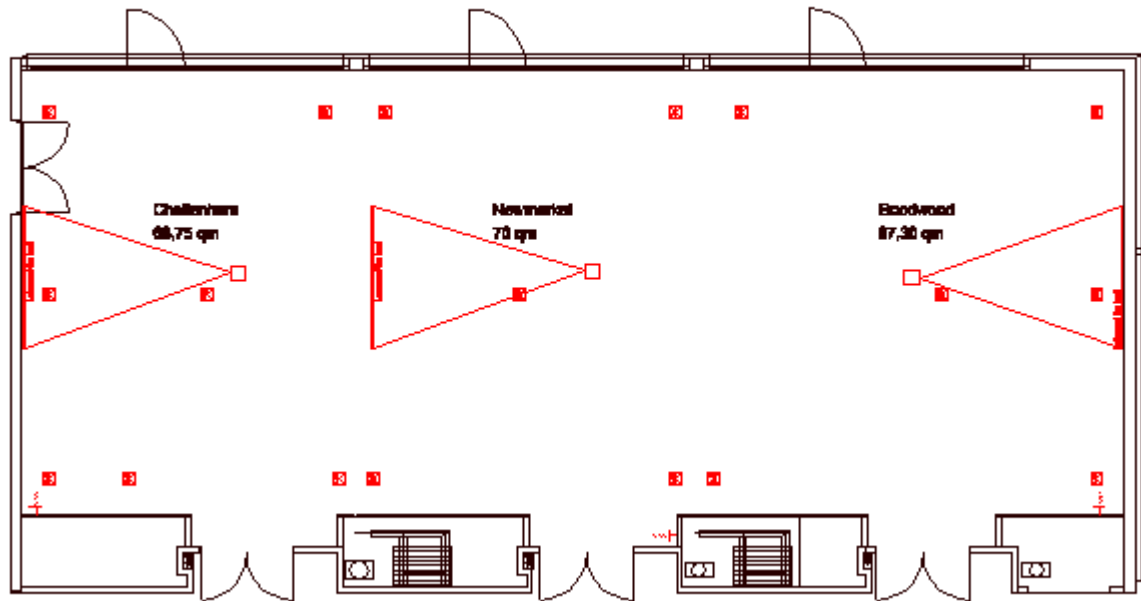
Daylight	x
Air-conditioned	x
To be darkened	x
Accessible by car	x
Internet access	WLAN/LAN
Power connection	220 V / 16 A
Projector	Integrated
TV connection	x
Sound system	x
Floor covering	Carpet
Location in hotel	1st floor with goods lift
Other features	Terrace, floor-to-ceiling windows

St. Andrews (Saal 2)



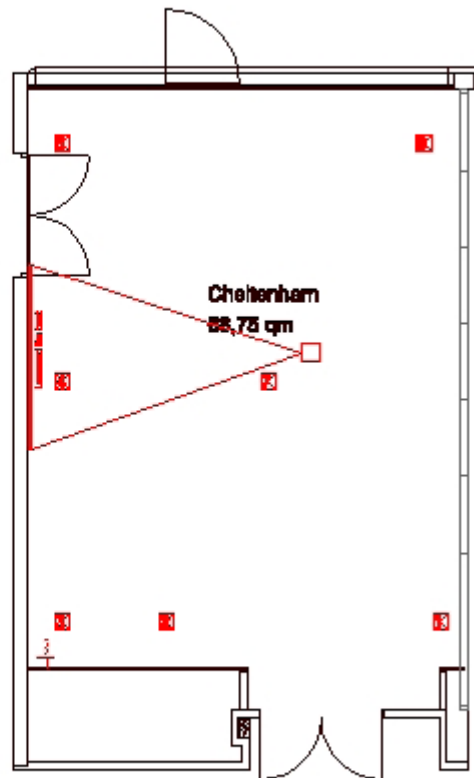
Daylight	x
Air-conditioned	x
To be darkened	x
Accessible by car	x
Internet access	WLAN/LAN
Power connection	220 V / 16 A
Projector	Integrated
TV connection	x
Sound system	x
Floor covering	Carpet
Location in hotel	1st floor with goods lift
Other features	Motor vehicle lift, terrace, floor-to-ceiling windows

Saal 3+4+5
(Cheltenham, Newmarket, Goodwood)



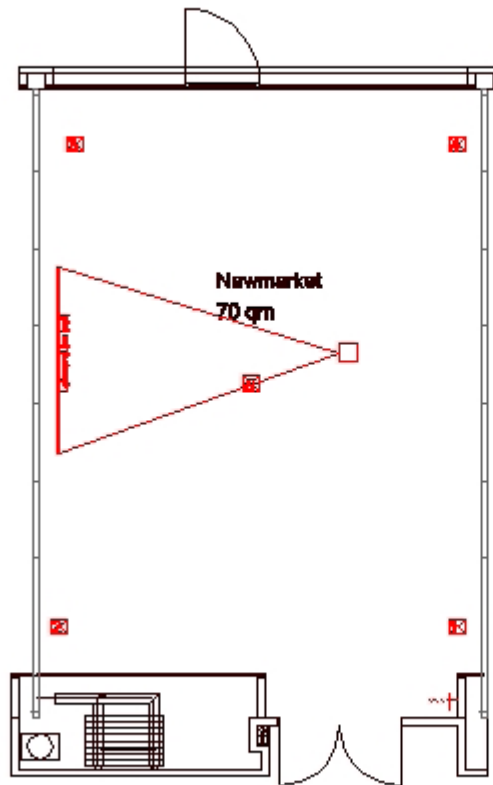
Daylight	x
Air-conditioned	x
To be darkened	x
Accessible by car	-
Internet access	WLAN/LAN
Power connection	220 V / 16 A
Projector	Integrated
TV connection	x
Sound system	x
Floor covering	Carpet
Location in hotel	1st floor with goods lift
Other features	Covered terrace, floor-to-ceiling windows

Cheltenham (Saal 3)



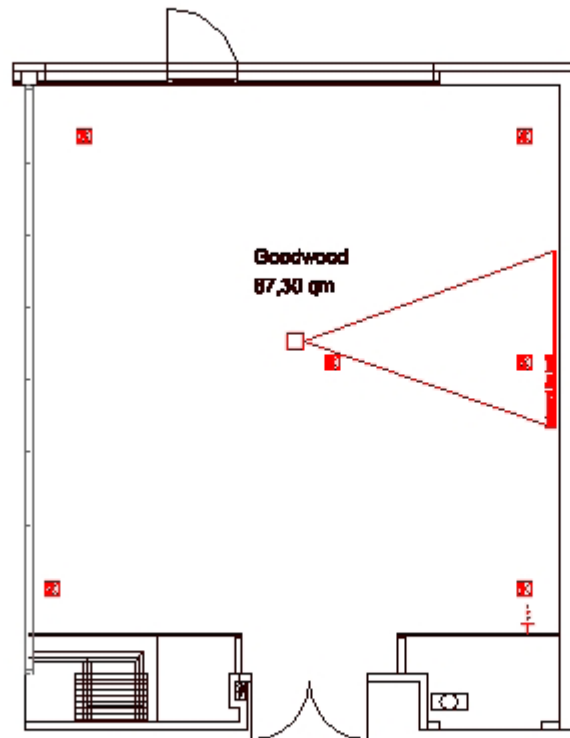
Daylight	x
Air-conditioned	x
To be darkened	x
Accessible by car	-
Internet access	WLAN/LAN
Power connection	220 V / 16 A
Projector	Integrated
TV connection	x
Sound system	x
Floor covering	Carpet
Location in hotel	1st floor with goods lift
Other features	Covered terrace, floor-to-ceiling windows

Newmarket (Saal 4)



Daylight	x
Air-conditioned	x
To be darkened	x
Accessible by car	-
Internet access	WLAN/LAN
Power connection	220 V / 16 A
Projector	Integrated
TV connection	x
Sound system	x
Floor covering	Carpet
Location in hotel	1st floor with goods lift
Other features	Covered terrace, floor-to-ceiling windows

Goodwood (Saal 5)

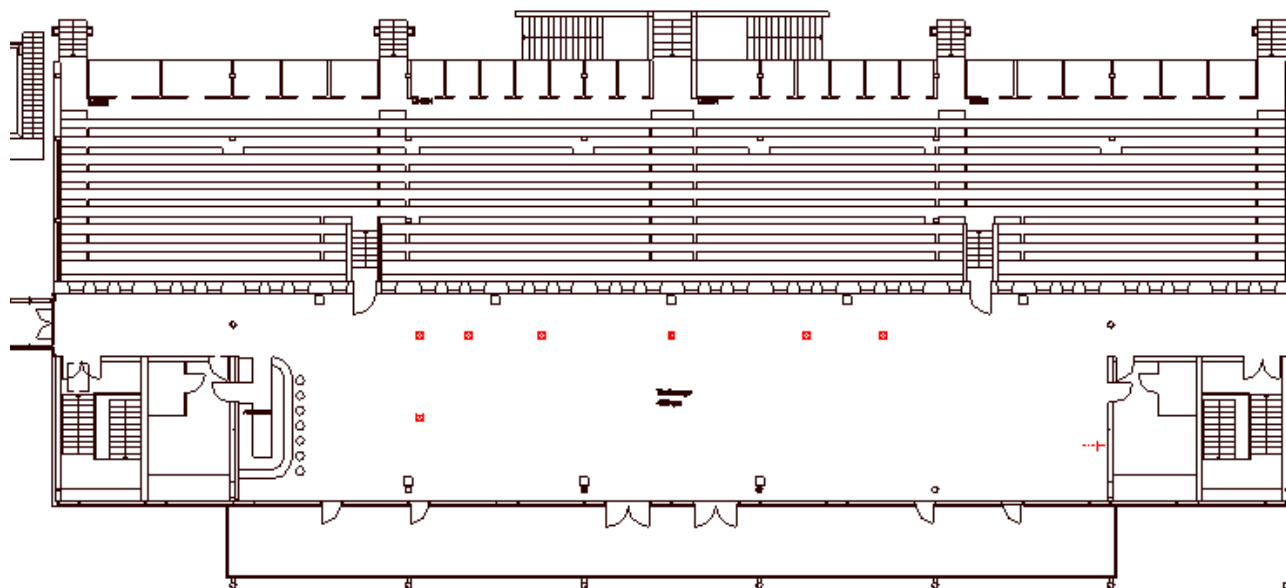


Daylight	x
Air-conditioned	x
To be darkened	x
Accessible by car	-
Internet access	WLAN/LAN
Power connection	220 V / 16 A
Projector	Integrated
TV connection	x
Sound system	x
Floor covering	Carpet
Location in hotel	1st floor with goods lift
Other features	Covered terrace, floor-to-ceiling windows

5 Conference studios

Daylight	x
Air-conditioned	-
To be darkened	x
Accessible by car	-
Internet access	WLAN/LAN
Power connection	220 V / 16 A
Projector	Mobile
TV connection	x
Sound system	-
Floor covering	Carpet
Location in hotel	2nd, 3rd and 4th floor
Other features	Floor-to-ceiling windows

Turflounge



Daylight	x
Air-conditioned	-
To be darkened	-
Accessible by car	-
Internet access	WLAN/LAN
Power connection	220 V / 16 A
Projector	Mobile
TV connection	x
Sound system	x
Floor covering	Carpet
Location in hotel	1st floor with goods lift
Other features	Covered terrace, floor-to-ceiling windows, direct access to the stand

ROOM COSTS

Clear and transparent

Transparency is one of the pillars of the ATLANTIC Hotels' SMART meetings & events concept. That's why we provide separate rates for our room costs.

	Room size in sqm	Set-up costs in EUR per day	Room costs in EUR per day
Saal 1	425	590.00	1,600.00
- St. Andrews	210	320.00	900.00
- Augusta	215	320.00	900.00
Foyer 1	170	on request	on request
Saal 2	230	420.00	1,100.00
- Cheltenham	70	160.00	400.00
- Newmarket	70	160.00	400.00
- Goodwood	90	190.00	500.00
Foyer 2	150	on request	on request
Cheltenham + Newmarket	140	350.00	900.00
Newmarket + Goodwood	160	350.00	900.00
5 Conference studios, each	30	350.00	/
Turf-Lounge	440	400.00	1,600.00
Turf-Balkon	140	on request	on request

The preparation costs for power, cleaning and seating mentioned above are charged regardless of the accommodation and the restaurant sales. Technology may be rented externally and charged separately if required.

ACCOMPANYING PROGRAMMES

Our supporting programmes offer a range of exciting experiences in Bremen or directly at the racecourse. Whether for company, seminar or private guests – our Event Team together with our expert partners will ensure a very special time for both you and your guests.

Here are some of the options available!

Summer festival with beer garden flair



Welcome your guests to your summer festival in our Beer Garden on the racecourse grounds. The trees are illuminated with floor spotlights to provide a colourful and summery atmosphere. Together with the festively decorated bar tables, the flambeaus and fire baskets are naturally also essential in the later hours.

Enjoy the “Rustic barbecue buffet”. A drinks package valid for four hours and with the following drinks is already included in the package: mineral water, refreshments, Haake Beck Pils/non-alcoholic and house red and white wine.

Services included in our summer festival packages:

- Reception
- Event area and hotel decorations
- Rustic barbecue buffet
- Drinks for a period of 4 hours

from € 58.50 per person, plus preparation costs.

This offer is available from 30 people from April to October depending on demand and availability.

We look forward to receiving your inquiry on 0421 333 00 562 or by sending an email to veranstaltung.ahg@atlantic-hotels.de!

Reserve your desired date now!

Rustic barbecue buffet

Leaf salad with various dressings and toppings

Potato cucumber salad with mustard vinaigrette

Tomato salad with red onions

Pasta salad with rocket and pine nuts

* * *

Marinated pork neck steak

Chicken breast in orange pepper marinade

Grilled sausage

Escolar with herbs

Potato wedges and sour cream

Corn on the cob and marinated grilled vegetables

Ketchup, mustard, aioli, BBQ sauce, sweet & sour sauce, tzatziki

* * *

Red-berry compote with vanilla sauce

Mousse au chocolat with mango ragout

The Rock



Discover THE ROCK, the extraordinary off-road vehicle track of Mercedes-Benz in Bremen. THE ROCK is pure action, driving pleasure and off-road power around Bremen's third-highest hill.

Take your adventure to the extreme and drive a Mercedes-Benz GLC to its limits. Accept the challenge and test your driving skills! You'll be impressed.

Guided tour of the Mercedes-Benz factory in Bremen



Ten Mercedes-Benz car models carry the "Made in Bremen" seal. Cars with the star on the bonnet have been produced in Bremen since 1978 – a total of more than eight million units. 12,700 employees ensure that more than 400,000 vehicles roll off the production line every year. Impressive figures. They show that Bremen has a big heart for cars.

Whether sporty and fast or luxurious and dignified. For example, the sporty racers SL and SLC are perennial favourites, of which more than a million have already left the production line. The Daimler plant in Bremen is at the same time the lead plant for the worldwide production of the C class. From here, all the production facilities of the C class are controlled, monitored and optimized.

Go on a tour of discovery and get a glimpse behind the scenes of a state-of-the-art automobile factory. Combine your tour with The Rock off-road vehicle track and a delicious BBQ.

Bring a Friend Tournament



The Bring a Friend Tournament is the best opportunity for active golfers to show their friends, colleagues or neighbours what they actually do on the golf course. This is where a golfer plays with a non-golfer. The active golfer takes all the shots to the green and the non-golfer putts.

The Bremen Golf Range offers a quick round of golf that's great fun for beginners as well as advanced golfers. The fast greens that are „well-defended“ by bunkers and the narrow fairways require absolute precision. A number of water hazards also provide a challenge for experienced golfers. The course highlight is the peninsula green on the 7th hole.

The course is particularly challenging for your short game and you can play an entire round in 2 hours.

Golf introductory course



Golf has developed into an entertaining mainstream sport that keeps drawing in more and more people, both young and old. Find out what it's all about and learn how to play golf at the Bremen Golf Range introductory golf course.

The introductory course includes:

- Instruction in small groups by our experienced golf pros.
- The latest teaching methods to make sure that you learn all the key points on driving, putting and pitching!
- Test your skills during the putting competition at the end of the course, including Prosecco...
- All that you need are comfortable clothes and sports shoes, we provide the rest!

Visit the Bremen Bonbon Manufaktur (sweets store)



As a child, who hasn't dreamt of designing their own sweet? Now you have the opportunity to realise the dream.

Sabine Marquart and her team will introduce you and your guests to the art of producing sweets in the historic surrounds of Böttcherstraße in Bremen. You will get involved, too, and create your „perfect sweet“!

Winter market



Our winter markets on the grounds of the Bremen Racecourse provides a special winter event in a private atmosphere. Pavilions with winter decorations and seasonal food and drinks let you and your guests create and enjoy your own winter market, winter wonderland or funfair!

Our team from the Event Office is happy to help!

PREFERRED PARTNERS

Our partner companies in the areas of technology, flowers, music, incentives and events expertly complement our portfolio with top-quality service!

External technology

HanseEvent GmbH
Kongreß- & Medientechnik
Solinger Straße 13
28199 Bremen
Tel. +49 421 5340015
info@hanseevent.de



active blue
Bauerland 19
28259 Bremen
Tel. +49 421 526286-0
info@active-blue.com



Rental items

Party Rent Bremen
Bernard & Roes GmbH
Auf der Muggenburg 7-9
28217 Bremen
Tel. +49 421 4348368-0
bremen@partyrent.com



Florist

Das Gewächshausatelier
Inh. Kerstin Adrian
Hamburger Straße 173
28205 Bremen
Tel. +49 421 22295684
kerstinadrian@t-online.de

Confectioner

Café Hauptmeier
Bahnhofsplatz 11
28195 Bremen
Tel. +49 421 3059801
info@zurpost.bestwestern.de



Sweets

Bremer Bonbon Manufaktur
Böttcherstraße 8
28195 Bremen
Tel. +49 421 36491231
post@bremer-bonbon-manufaktur.de



Photographer

Fotografie Antje Schimanke
Schleusenstraße 24
27568 Bremerhaven
Tel. +49 471 3095247
info@schimanke-fotografie.de

FOTOGRAFIE
Antje Schimanke

Photo box

Schnappschuss-Bremen
Die mobile Fotobox
Luganer Straße 46
28325 Bremen
Tel. +49 176 24921255
info@schnappschuss-bremen.de



DJ/ Band

PowerStation Mobildisothek
EBH Radio Software GmbH
Haferwende 27
28357 Bremen
Tel. +49 421 2048480
powerstation@ebh.com

BRIDGES & HOOKS
Markus Gensior
Accumersiel 2
26389 Wilhelmshaven
Tel. +49 178 4484919
bridgesandhooks@online.de


BRIDGES & HOOKS
Singer/Songwriter Music

CONTACTS

In good hands

Our Event Sales Team is looking forward to planning your event at our hotel together with you. Please feel free to contact us at veranstaltung.ahg@atlantic-hotels.de or +49 421 333 000!



Julia Griesenbeck
Event Manager
Direct line: +49 421 33300-561
Email: jgriesenbeck@atlantic-hotels.de



Lia Hamann
Event Sales Manager
Direct line: +49 421 33300-567
Email: lhamann@atlantic-hotels.de



Rieke Schlamann
Event Sales Coordinator
Direct line: +49 421 33300-562
Email: rschlamann@atlantic-hotels.de



Stephanie Herrmann
Deputy Event Sales Manager
Direct line: +49 421 33300-562
Email: sherrmann@atlantic-hotels.de