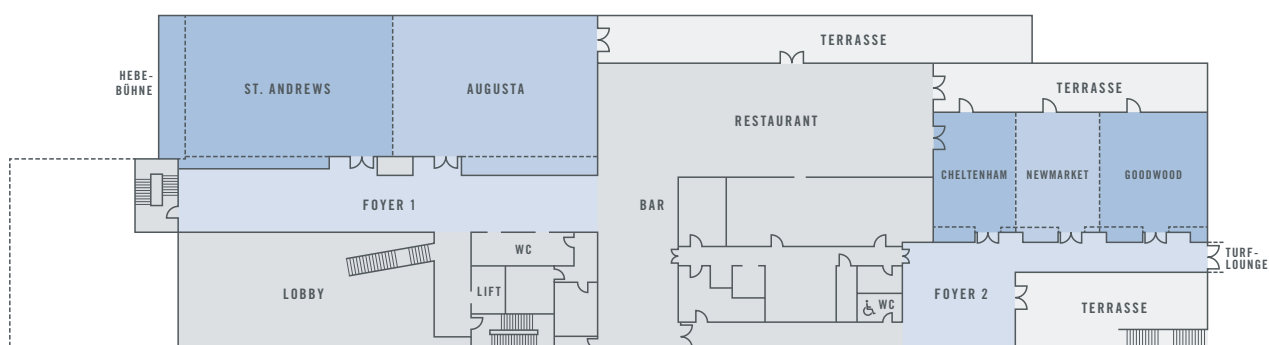


FUNCTION ROOMS

Capacities

The ATLANTIC Hotel Galopprennbahn has 11 conference rooms. The largest conference room is 425 sqm in size and can accommodate up to 460 people. All rooms are bathed in natural light by the floor-to-ceiling windows facing the racecourse but can be entirely blacked-out if required. The latest technology is integrated into all the rooms.

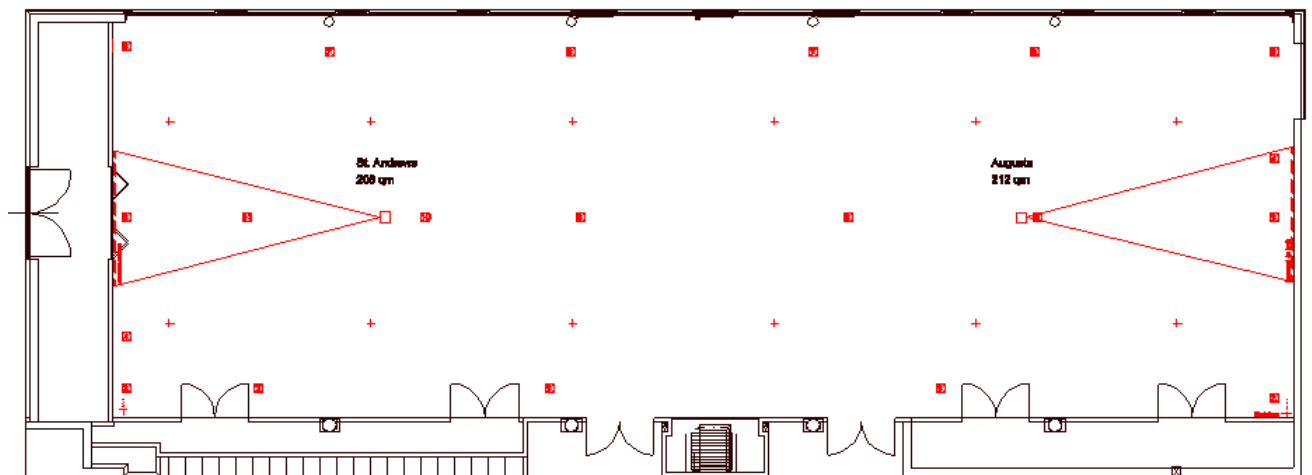


	sqm	Maximum number of persons						Room dimensions		
								Length	Width	Height
Saal 1	425	460	240	80	300	/	500	35.50	12.05	3.75
- St. Andrews	210	225	120	60	150	40	200	17.45	12.05	3.75
- Augusta	215	225	120	60	150	40	200	17.75	12.05	3.75
Foyer 1	170	/	/	/	/	/	200			
Saal 2	230	170	100	60	160	40	250	23.40	9.50	3.50
- Cheltenham	70	50	30	18	50	20	70	7.20	9.50	3.50
- Newmarket	70	50	30	18	50	20	70	7.20	9.50	3.50
- Goodwood	90	60	40	20	60	25	90	9.10	9.50	3.50
Foyer 2	150	/	/	/	/	/	150			
5 Conference studios, each	30	/	/	/	/	8	/			
Turf-Lounge	440	400	100	40	300	40	475	42.00	10.00	3.30
Turf-Balkon	140	/	/	/	/	/	/			

Visualizations

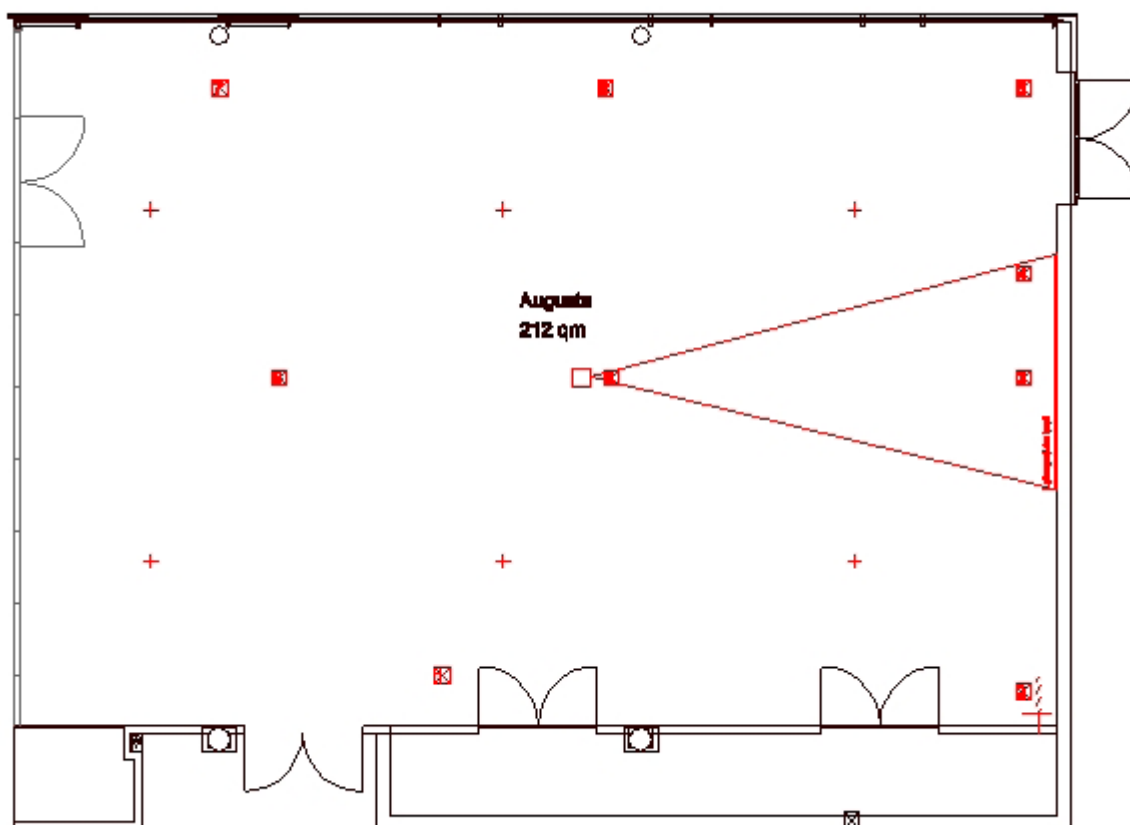
Here you can get an overview of the individual layout options of our function rooms:

Saal 1+2 (Augusta + St. Andrews)



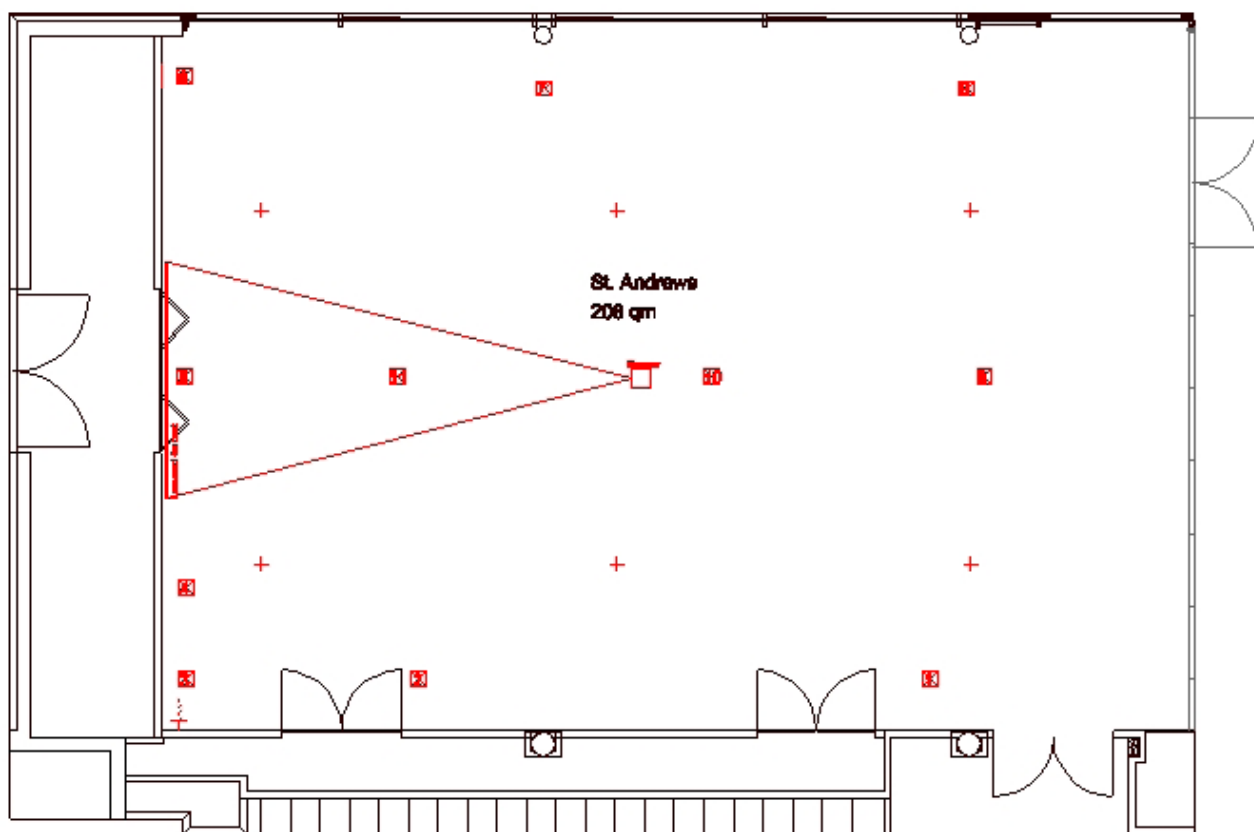
Daylight	✓
Air-conditioned	✓
To be darkened	✓
Accessible by car	✓
Internet access	WLAN/LAN
Power connection	220 V / 16 A
Projector	Integrated
TV connection	✓
Sound system	✓
Floor covering	Carpet
Location in hotel	1st floor with goods lift
Other features	Motor vehicle lift, terrace, floor-to-ceiling windows

Augusta (Saal 1)



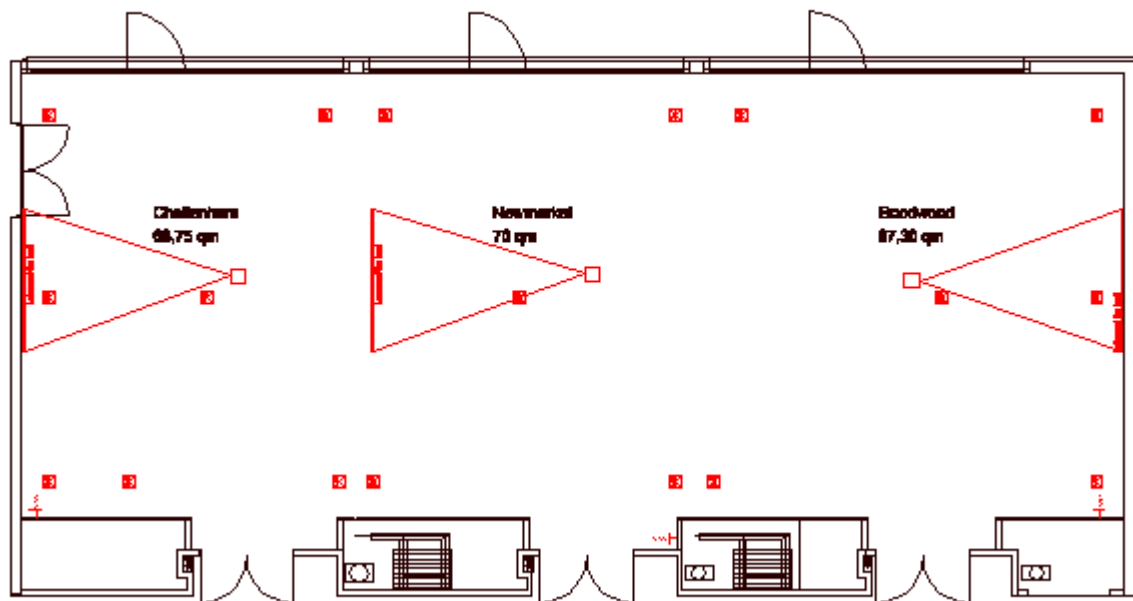
Daylight	✓
Air-conditioned	✓
To be darkened	✓
Accessible by car	✓
Internet access	WLAN/LAN
Power connection	220 V / 16 A
Projector	Integrated
TV connection	✓
Sound system	✓
Floor covering	Carpet
Location in hotel	1st floor with goods lift
Other features	Terrace, floor-to-ceiling windows

St. Andrews (Saal 2)



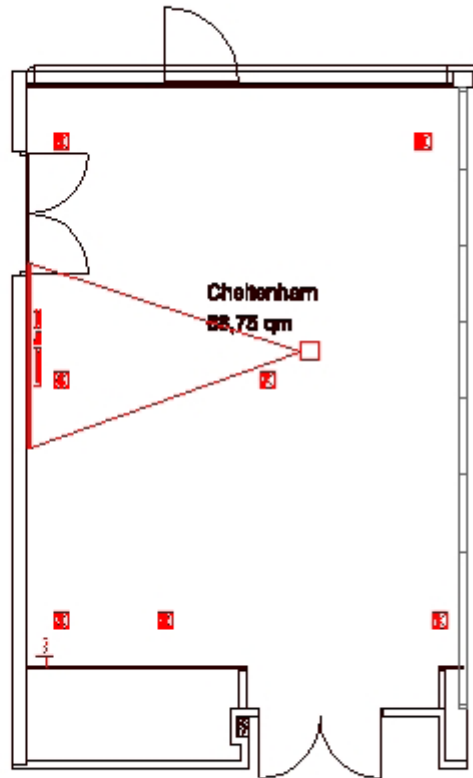
Daylight	✓
Air-conditioned	✓
To be darkened	✓
Accessible by car	✓
Internet access	WLAN/LAN
Power connection	220 V / 16 A
Projector	Integrated
TV connection	✓
Sound system	✓
Floor covering	Carpet
Location in hotel	1st floor with goods lift
Other features	Motor vehicle lift, terrace, floor-to-ceiling windows

Saal 3+4+5
(Cheltenham, Newmarket, Goodwood)



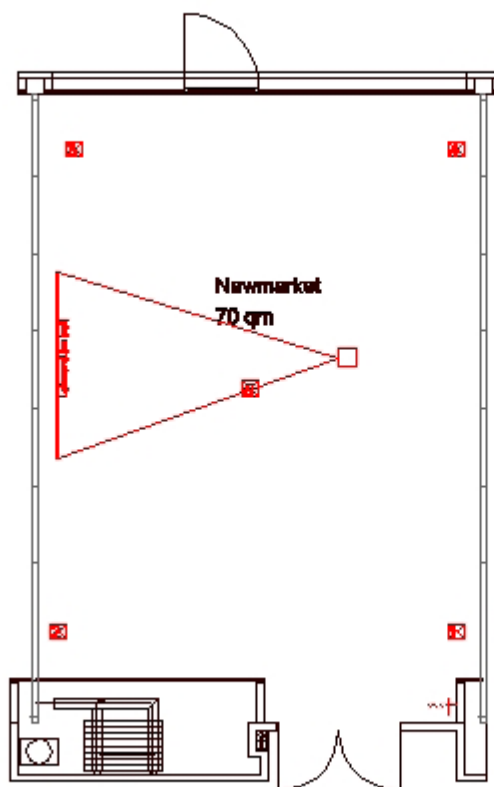
Daylight	✓
Air-conditioned	✓
To be darkened	✓
Accessible by car	–
Internet access	WLAN/LAN
Power connection	220 V / 16 A
Projector	Integrated
TV connection	✓
Sound system	✓
Floor covering	Carpet
Location in hotel	1st floor with goods lift
Other features	Covered terrace, floor-to-ceiling windows

Cheltenham (Saal 3)



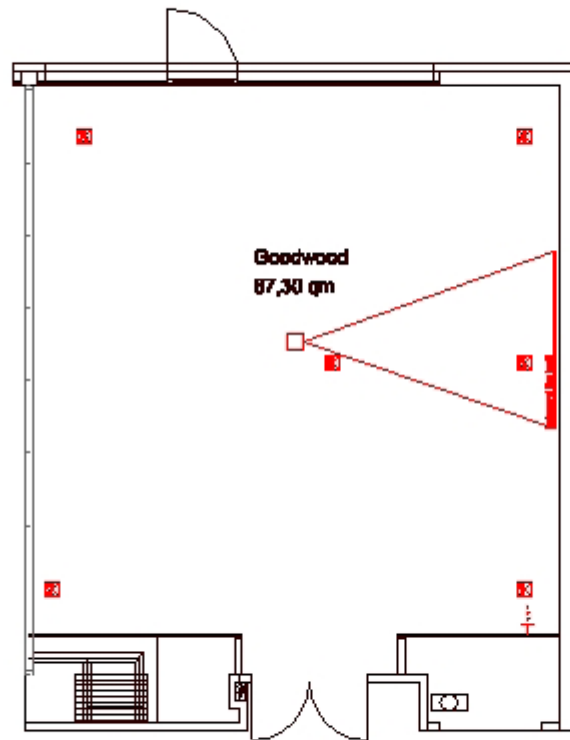
Daylight	✓
Air-conditioned	✓
To be darkened	✓
Accessible by car	–
Internet access	WLAN/LAN
Power connection	220 V / 16 A
Projector	Integrated
TV connection	✓
Sound system	✓
Floor covering	Carpet
Location in hotel	1st floor with goods lift
Other features	Covered terrace, floor-to-ceiling windows

Newmarket (Saal 4)



Daylight	✓
Air-conditioned	✓
To be darkened	✓
Accessible by car	–
Internet access	WLAN/LAN
Power connection	220 V / 16 A
Projector	Integrated
TV connection	✓
Sound system	✓
Floor covering	Carpet
Location in hotel	1st floor with goods lift
Other features	Covered terrace, floor-to-ceiling windows

Goodwood (Saal 5)

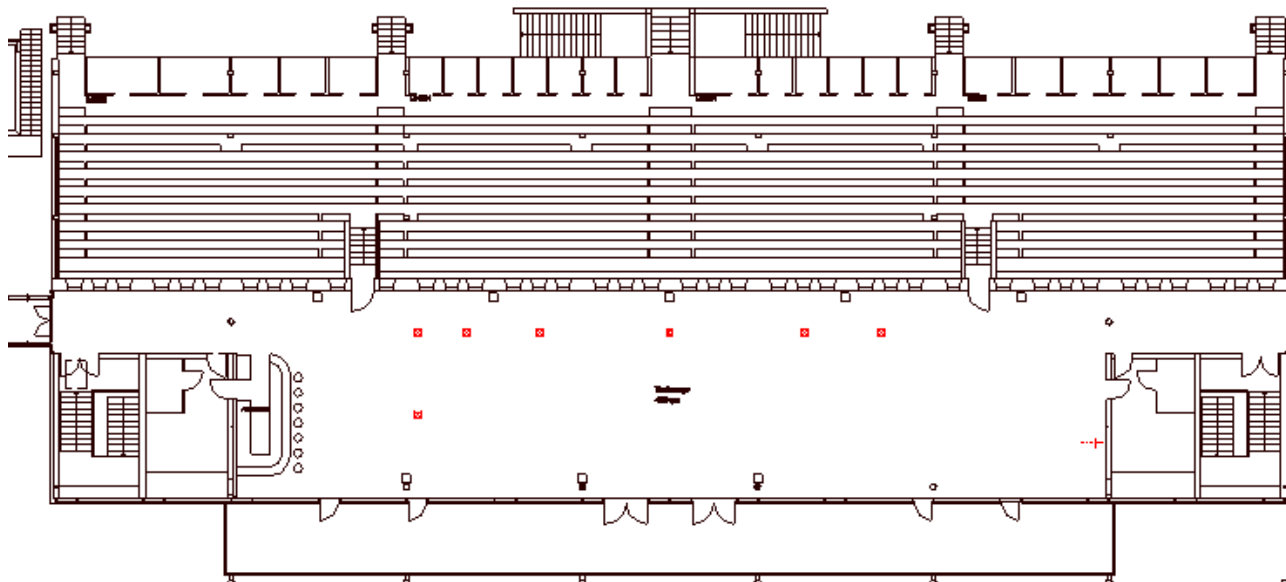


Daylight	✓
Air-conditioned	✓
To be darkened	✓
Accessible by car	–
Internet access	WLAN/LAN
Power connection	220 V / 16 A
Projector	Integrated
TV connection	✓
Sound system	✓
Floor covering	Carpet
Location in hotel	1st floor with goods lift
Other features	Covered terrace, floor-to-ceiling windows

5 Conference studios

Daylight	✓
Air-conditioned	-
To be darkened	✓
Accessible by car	-
Internet access	WLAN/LAN
Power connection	220 V / 16 A
Projector	Mobile
TV connection	✓
Sound system	-
Floor covering	Carpet
Location in hotel	2nd, 3rd and 4th floor
Other features	Floor-to-ceiling windows

Turflounge



Daylight	✓
Air-conditioned	–
To be darkened	–
Accessible by car	–
Internet access	WLAN/LAN
Power connection	220 V / 16 A
Projector	Mobile
TV connection	✓
Sound system	✓
Floor covering	Carpet
Location in hotel	1st floor with goods lift
Other features	Covered terrace, floor-to-ceiling windows, direct access to the stand

ROOM COSTS

Clear and transparent

Transparency is one of the pillars of the ATLANTIC Hotels' SMART meetings & events concept. That's why we provide separate rates for our room costs.

	Room size in sqm	Set-up costs in EUR per day	Room costs in EUR per day
Saal 1	425	900.00	1,800.00
- St. Andrews	210	450.00	900.00
- Augusta	215	450.00	900.00
Foyer 1	170	on request	on request
Saal 2	230	490.00	1,100.00
- Cheltenham	70	250.00	500.00
- Newmarket	70	250.00	500.00
- Goodwood	90	350.00	550.00
Foyer 2	150	on request	on request
Cheltenham + Newmarket	140	450.00	900.00
Newmarket + Goodwood	160	450.00	900.00
5 Conference studios, each	30	350.00	/
Turf-Lounge	440	600.00	2,500.00
Turf-Balkon	140	on request	on request

The preparation costs for power, cleaning and seating mentioned above are charged regardless of the accommodation and the restaurant sales. Technology may be rented externally and charged separately if required.