







FUNCTION ROOMS

In our 8 function rooms at an “altitude” of 35 metres, you will find the perfect settings for conferences and celebrations while the planes take off from the runway directly opposite.

Room capacities

You can choose from rooms between 35 sqm and 350 sqm.

Whatever you may need for your conference, meeting or presentation, our Event Sales Team is happy to provide information on the availability, location, size, capacity and equipment of all the rooms.

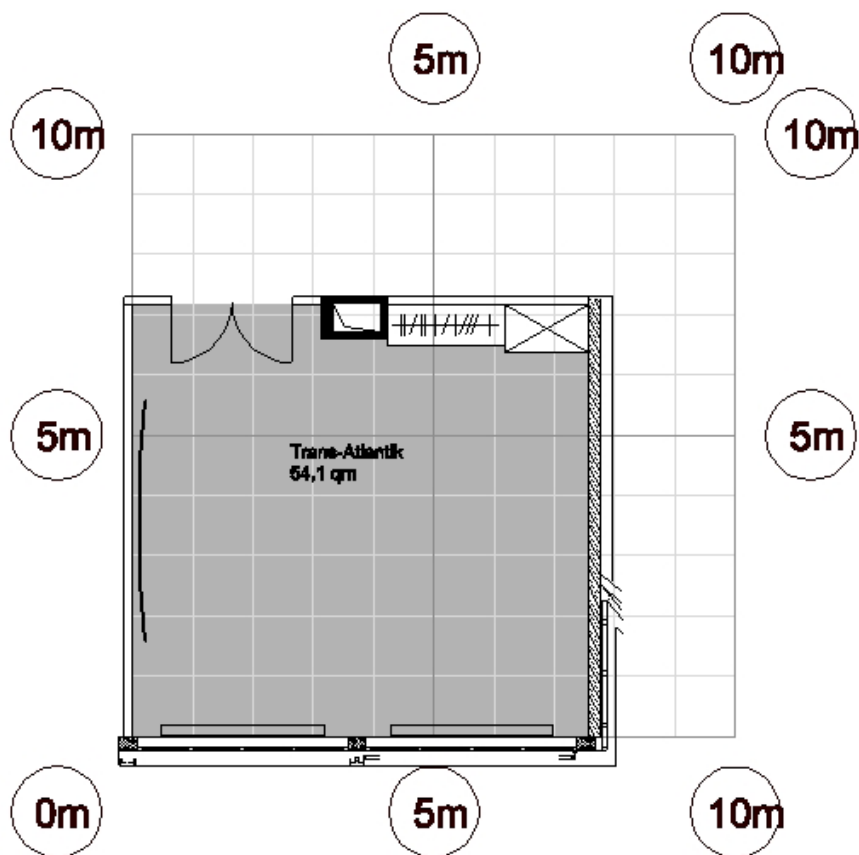
	sqm	Maximum number of persons						Room dimensions		
								Length	Width	Height
Trans-Atlantik	54	30	20	14	24	20	30	7.20	7.60	3.00
Dornier	52	30	20	14	24	20	30	7.50	7.10	3.00
Armstrong	106	80	50	35	40	40	60	15.00	7.00	3.00
Pazific	54	30	20	14	24	20	30	7.20	7.60	3.00
Lindbergh	54	30	20	14	24	20	30	7.20	7.60	3.00
Junkers	52	30	20	14	24	20	30	7.20	7.60	3.00
Lilienthal	200	30	20	15	–	16	50	17.50	10.50	3.00
Pazific + Lindbergh	108	80	50	35	40	40	60	14.40	7.60	3.00
Lilienthal + Junkers	252	110	50	40	40	40	80	14.20	7.60	3.00
Junkers + Lindbergh + Pacific	160	200	90	–	70	60	90	21.60	7.60	3.00
Lilienthal + Junkers + Lindbergh	306	200	110	–	70	60	110	28.60	7.60	3.00
Lilienthal + Junkers + Lindbergh + Pazific	360	250	150	–	100	80	250	28.60	7.60	3.00
Fokker	35	–	–	–	–	8	–	7.00	5.00	2.70

All function rooms (except for the “Fokker” room, fourth floor) are located on the eighth floor of the hotel.

Visualizations

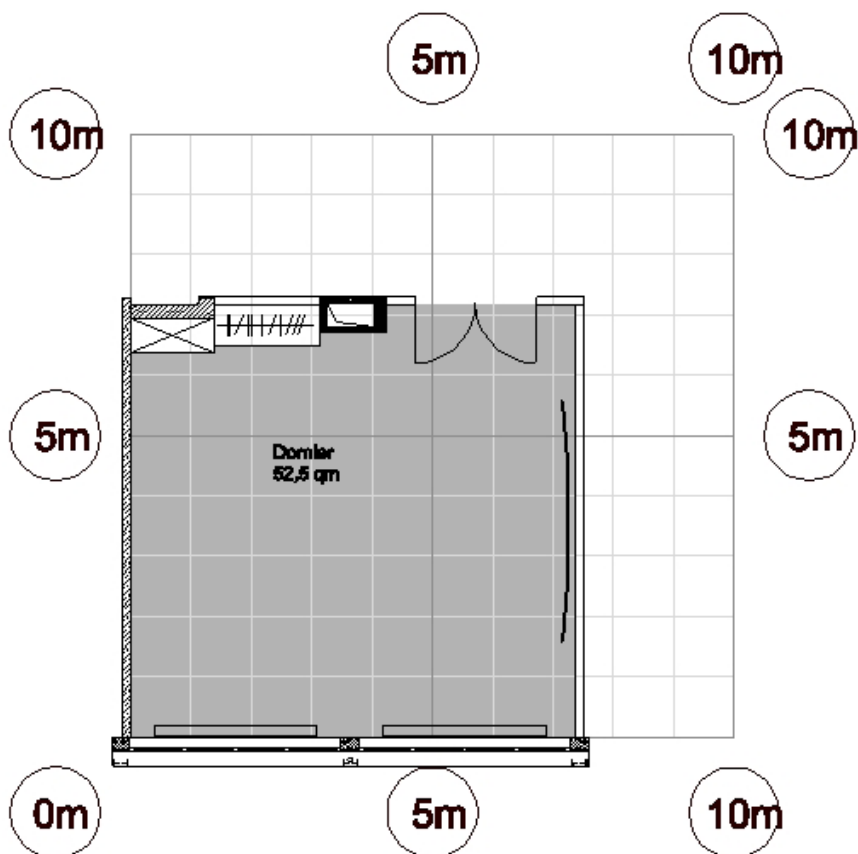
Here you can get an overview of the individual layout options of our function rooms:

Trans-Atlantik



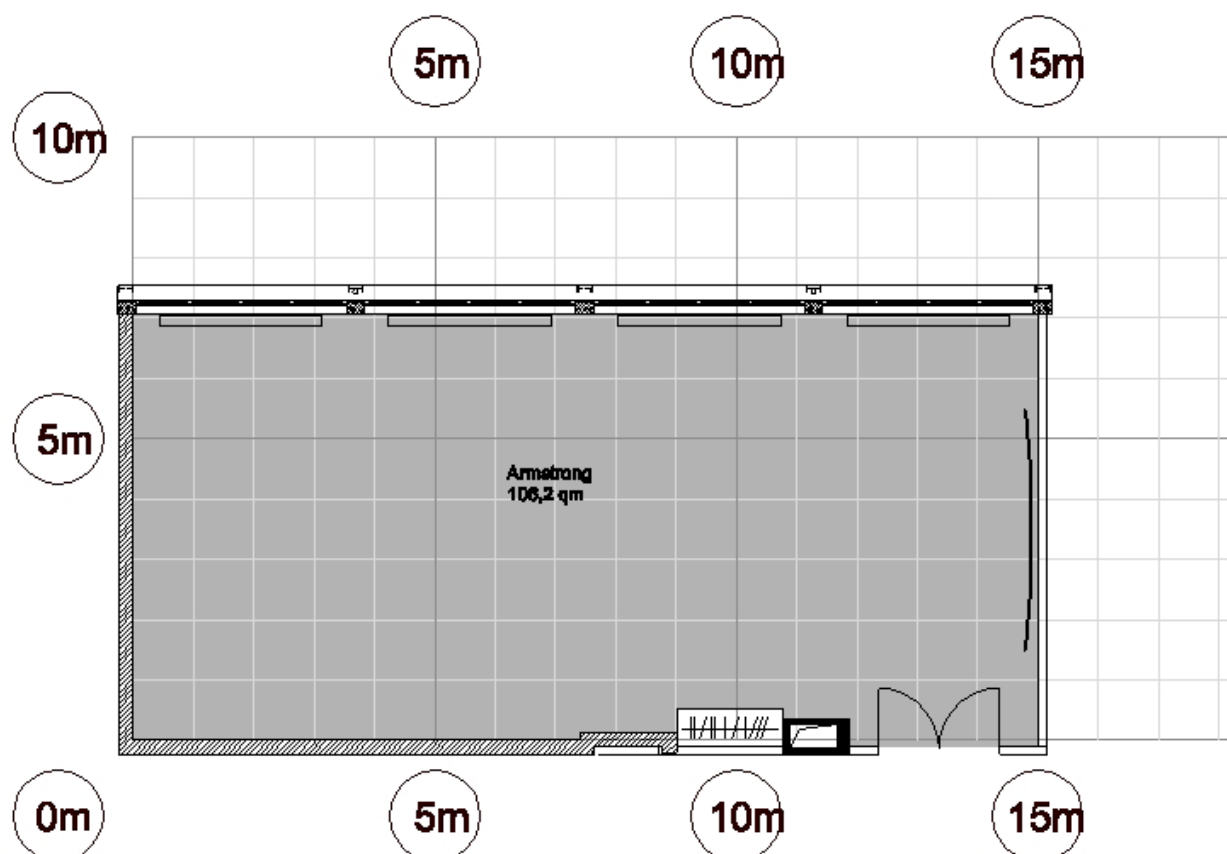
Daylight	✓
Air-conditioned	✓
To be darkened	✓
Accessible by car	-
Internet access	WLAN/LAN
Power connection	12 x 230 V
Projector	Mobile
TV connection	✓
Sound system	-
Floor covering	Carpet
Location in hotel	8th floor
Other features	Dimmable light

Dornier



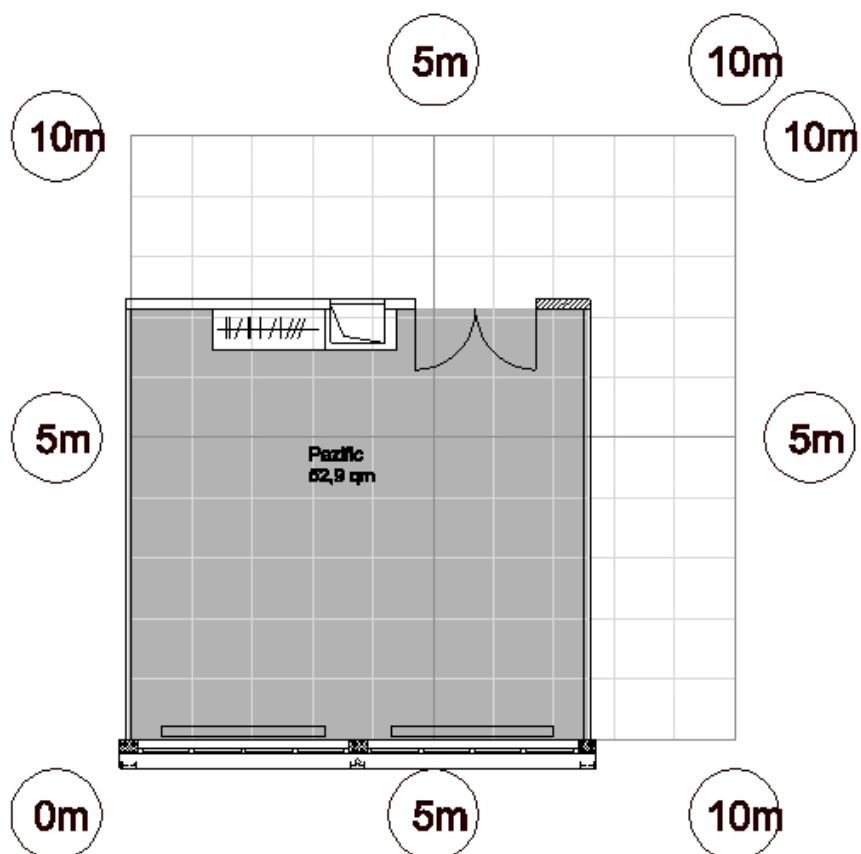
Daylight	✓
Air-conditioned	✓
To be darkened	✓
Accessible by car	-
Internet access	WLAN/LAN
Power connection	12 x 230 V
Projector	Mobile
TV connection	✓
Sound system	-
Floor covering	Carpet
Location in hotel	8th floor
Other features	Dimmable light

Armstrong



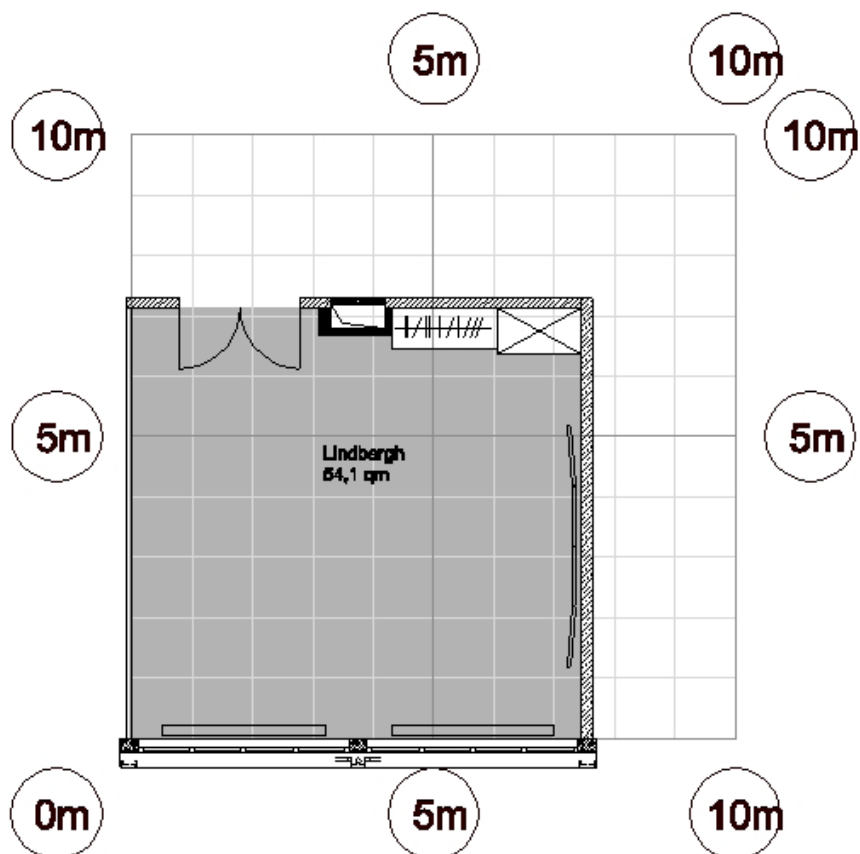
Daylight	✓
Air-conditioned	✓
To be darkened	✓
Accessible by car	-
Internet access	WLAN/LAN
Power connection	16 x 230 V
Projector	Mobile
TV connection	✓
Sound system	-
Floor covering	Carpet
Location in hotel	8th floor
Other features	Dimmable light

Pazific



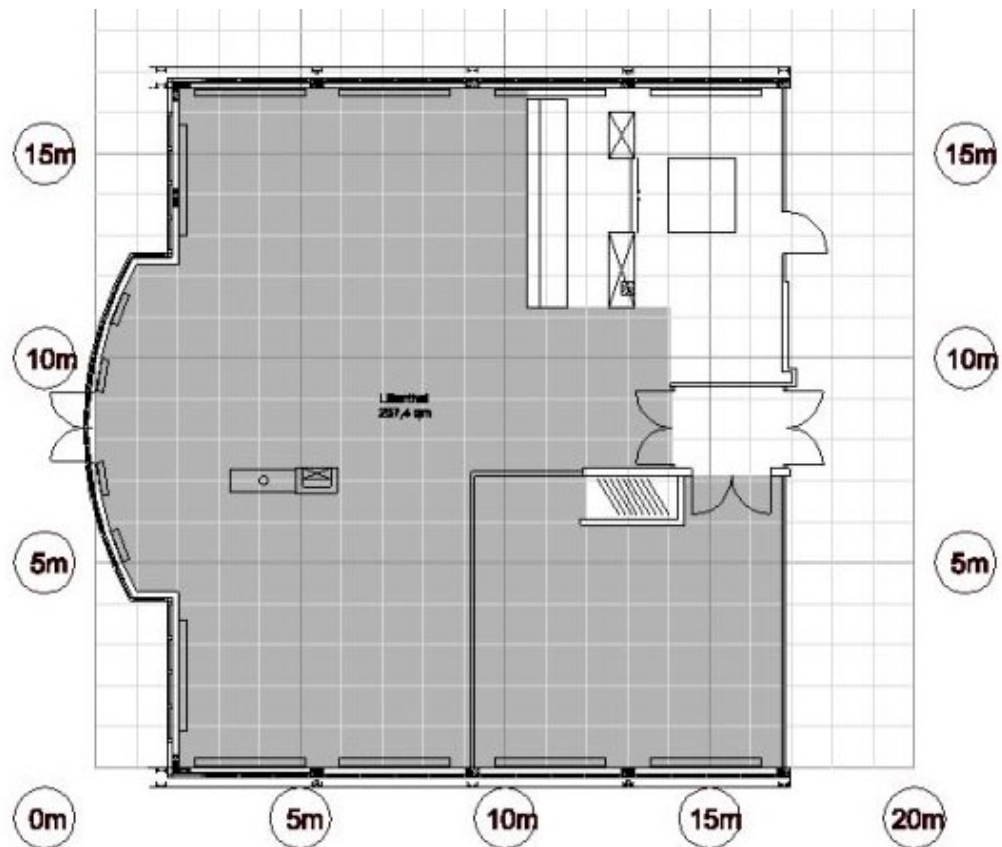
Daylight	✓
Air-conditioned	✓
To be darkened	✓
Accessible by car	-
Internet access	WLAN/LAN
Power connection	9 x 230 V
Projector	Mobile
TV connection	✓
Sound system	-
Floor covering	Carpet
Location in hotel	8th floor
Other features	Dimmable light

Lindbergh



Daylight	✓
Air-conditioned	✓
To be darkened	✓
Accessible by car	-
Internet access	WLAN/LAN
Power connection	10 x 230 V
Projector	Mobile
TV connection	-
Sound system	-
Floor covering	Carpet
Location in hotel	8th floor
Other features	Dimmable light

Lilienthal



Daylight	✓
Air-conditioned	✓
To be darkened	✓
Accessible by car	-
Internet access	WLAN/LAN
Power connection	28 x 230 V
Projector	Mobile
TV connection	✓
Sound system	-
Floor covering	Carpet
Location in hotel	8th floor
Other features	Dimmable light

Junkers

Daylight	✓
Air-conditioned	✓
To be darkened	✓
Accessible by car	–
Internet access	WLAN/LAN
Power connection	13 x 230 V
Projector	Mobile
TV connection	–
Sound system	–
Floor covering	Carpet
Location in hotel	8th floor
Other features	Dimmable light

Fokker

Daylight	✓
Air-conditioned	✓
To be darkened	✓
Accessible by car	–
Internet access	WLAN/LAN
Power connection	11 x 230 V
Projector	Mobile
TV connection	–
Sound system	–
Floor covering	Carpet
Location in hotel	4th floor
Other features	Dimmable light

ROOM COSTS

Clear and transparent

Transparency is one of the pillars of the ATLANTIC Hotels' SMART meetings & events concept. When you book a conference package, we charge a Set-up costs to cover power, seating and cleaning of the room. This fee depends on the size of the room, and not the accommodation and restaurant sales.

In addition to the fees for the Economy, Business and Business Plus conference packages, we charge a per-day preparation fee that depends on the size of the function room.

For the individual use of a room without a conference package, we charge a room rental fee that depends on the size of the room and duration of use.

	Room size in sqm	Package room rental in EUR	Individual room rental in EUR
Trans-Atlantik	54	200.00	from 250.00
Dornier	52	200.00	from 250.00
Armstrong	106	260.00	from 350.00
Pazific	54	200.00	from 250.00
Lindbergh	54	200.00	from 250.00
Junkers	52	200.00	from 250.00
Lilienthal	200	260.00	from 350.00
Pazific + Lindbergh	108	260.00	from 350.00
Lilienthal + Junkers	252	300.00	from 550.00
Junkers + Lindbergh + Pacific	160	360.00	from 450.00
Lilienthal + Junkers + Lindbergh	306	360.00	from 650.00
Lilienthal + Junkers + Lindbergh + Pazific	360	390.00	from 950.00
Fokker	35	200.00	from 200.00