



## SMART EVENTS AT ATLANTIC HOTEL AIRPORT

ATLANTIC Hotel Airport  
Flughafenallee 26 · 28199 Bremen  
Tel. +49 (0)421 55 71-0  
Fax +49 (0)421 55 71-100  
[airport@atlantic-hotels.de](mailto:airport@atlantic-hotels.de)

Events Team  
Tel. +49 (0)421 55 71-162 / -178  
[veranstaltung.aha@atlantic-hotels.de](mailto:veranstaltung.aha@atlantic-hotels.de)

## CELEBRATE 35 METRES HIGH

Whether birthday, wedding or Christmas party – our bright and modern function rooms on the 8th floor can be flexibly arranged and offer you the right setting for private and business celebrations for up to 250 guests.

Our kitchen crew takes you on a world trip of flavour: Our international, cosmopolitan cuisine is strongly influenced by the cultural origins of our staff members.

**Our tip:** A very special highlight for celebrations is our BLIXX restaurant with a fascinating view over the runway of Bremen Airport. Exclusive booking possible for up to 110 guests.

### Everything at a glance

Our event folder gives you a compact overview of some of our ideas:

- Menus
- Buffets
- Beverages
- Event packages
- Weddings
- Offers
- Room capacities
- Accompanying programmes
- Preferred partners
- Contacts

Our Event Sales Team will be happy to help you plan and implement your event!

## MENUS

For your celebratory event, we offer you our festive menus, which can be booked for groups of 10 or more:

*From 25 persons, we recommend our buffets.*

### Menu I

Tomato essence  
with basil sweetcorn dumplings

\* \* \*

Grilled fillet of zander  
with bacon & beans, thyme and La Ratte potatoes

\* \* \*

Parfait of tonka beans with apple crumble

€ 32.50 per person

### Menu II

Medium rare roast beef  
with horseradish espuma and celery salad

\* \* \*

Chicken breast satay  
with chilli, peanut sauce, beluga lentils and pak choi

\* \* \*

Tiramisù in a glass  
with vanilla parfait

€ 34.50 per person

### Menu III

Fillet of lamb on marinated green salads with aubergine

\* \* \*

Asian consommé  
with beef strips, soybean sprouts and coriander

\* \* \*

Susländer pork loin steak under a herbed walnut crust  
with pointed cabbage, cream and Macaire potatoes

\* \* \*

Sweet blinis  
with raspberry parfait, caramelized pecan nuts  
and cardamom chocolate sauce

**€ 37.50 per person**

*A list of all allergenic ingredients is available on request.*

Our suggestions don't quite hit the mark? We will be glad to hear your ideas!

## BUFFETS

For your celebratory event, we offer you our festive buffets, which can be booked for groups of 25 or more:

*For less than 25 persons, we recommend our menus.*

### Buffet I

Pak choi passi with aubergine and date salad

Vegetables marinated in balsamic vinegar

Fennel salami and coppa from Spain

Aubergine piccata  
with vinaigrette and capers

A variety of prepared salads

A selection of green salads with topping

A selection of breads & salted butter

\* \* \*

Consommé with lemongrass and coriander

\* \* \*

Fillet of cod fried in a potato crust  
with herbs and pointed cabbage

Steaks from the sirloin  
with tomatoes and cheese au gratin  
on oyster mushrooms with Charlotte potatoes

Sweet potato curry with caramelized pineapple

\* \* \*

A small selection of cheeses with fig sauce

Pistachio mousse with white chocolate

Small Vanilla cakes with strawberry soup

€ 37.50 per person

**Buffet II**

Fried pears with blue cheese and rocket salad

A variety of air-dried specialities with antipasti vegetables

Selection of French cheeses

Fresh green salads

Freshwater crayfish and Calvados salad

Baguette and whipped butter

\* \* \*

Creamy kohlrabi soup

\* \* \*

Braised ox cheeks in shallot sauce with green beans

Fillet of salmon fried in sesame seeds, on Romanesco mustard purée

Swabian ravioli with sautéed onions and thyme

Steamed potatoes and finger noodles

\* \* \*

Chocolate crunch with custard

Curd cheese cream with stewed plums

Blackberry mousse with white chocolate

**€ 39.00 per person**

### Buffet III

Bruschetta with tomatoes, olives and Parmesan

A variety of salads

Duck terrine with honey polenta

Mini wraps with chicken and mung bean sprouts

Rösti gratinated with salmon and horseradish

French cheese with grissini

Diced tuna grilled at the buffet,  
coated in coriander

Bread and butter

\* \* \*

Cauliflower cream with capers and cress

\* \* \*

Cape hake on pak choi  
and two kinds of rice

Chicken with smoked paprika and mint,  
fried, on dill zucchini

Roast beef carved at the buffet,  
with balsamic shallot sauce

Potato gratin and herb rösti

\* \* \*

Lemon cream with cumquats

Pata de nata with pineapple salad

Crème brûlée

Almond petit fours

€ 47.00 per person

*A list of all allergenic ingredients is available on request.*

Our suggestions don't quite hit the mark? We will be glad to hear your ideas!

## BEVERAGES

Choose from a number of drinks or explore our world of wine. We will be happy to advise you on which beverages and wines go well with your menu or buffet.

### Apéritifs

Sartori <i>Prosecco Spumante</i>	0.1 l	€ 5.70
Hugo <i>Prosecco with elderberry blossom syrup, mint &amp; lime</i>	0.1 l	€ 8.00
Chambord Royale <i>Black raspberry liqueur filled with Crémant</i>	0.1 l	€ 6.50
Lorenz & Dahlberg <i>sparkling wine, dry</i>	0.1 l	€ 4.50
Ashton Kelder <i>Sparkling sparkling wine, non-alcoholic</i>	0.1 l	€ 4.10
Crémant de Loire <i>Bouvet, Saumur</i>	0.1 l	€ 5.10
Kir Royal with Crémant	0.1 l	€ 7.50
Campari Orange, Soda, Tonic	4 cl	€ 7.50
Gin Tonic (Gordons)	4 cl	€ 8.20
Lillet Blanc, Rouge, Rosé	5 cl	€ 5.80
Martini Extra Dry, bianco, rosso, d'oro	5 cl	€ 5.00
Cinzano Bianco, Rosso, Extra Dry, Limetto, Orancio	5 cl	€ 5.30
Pernod	5 cl	€ 5.40
Ricard	5 cl	€ 6.00
Sandemann Medium, Cream	5 cl	€ 4.70
Sandemann Port Tawny	5 cl	€ 4.80

### Hot drinks

Coffee	€ 2.60
Coffee Hag (decaf)	€ 2.60
ALTHAUS pot of tea	€ 5.90
Cappuccino	€ 3.00
Café au lait	€ 3.40
Latte Macchiato	€ 3.40
Espresso	€ 2.40
Double Espresso	€ 3.70
Espresso Macchiato	€ 2.60
Hot chocolate with cream	€ 3.40

### Non-alcoholic drinks

Magnus mineral water	0.25 l	€ 2.90
Magnus mineral water	0.75 l	€ 6.60
Magnus still water	0.25 l	€ 2.90
Magnus still water	0.75 l	€ 6.60



<b>Niehoff's fruit juices</b>	0.20 l	€ 3.10
Pineapple juice	0.20 l	€ 3.10
Apple juice	0.20 l	€ 3.10
Orange juice	0.20 l	€ 3.10
Sour cherry nectar	0.20 l	€ 3.10
Banana nectar	0.20 l	€ 3.10
Currant nectar	0.20 l	€ 3.10
Tomato juice	0.20 l	€ 3.10
Peach nectar	0.20 l	€ 3.10
Passion fruit nectar	0.20 l	€ 3.10
Cherry banana nectar	0.40 l	€ 5.90
Spritzer	0.20 l	€ 2.80
Spritzer	0.40 l	€ 4.90

Freshly squeezed orange juice	0.20 l	€ 6.50
-------------------------------	--------	--------

#### Soft drinks

Coca Cola, light, Zero	0.20 l	€ 2.90
Fanta, Sprite, Spezi (Coca-Cola Fanta mix)	0.20 l	€ 2.90
Coca Cola, light, Zero	0.40 l	€ 4.50
Fanta, Sprite, Spezi (Coca-Cola Fanta mix)	0.40 l	€ 4.50

Schweppes Tonic Water	0.20 l	€ 3.10
Schweppes Ginger Ale	0.20 l	€ 3.10
Schweppes Bitter Lemon	0.20 l	€ 3.10
Thomas Henry Tonic Water	0.20 l	€ 3.60
Fentimans Tonic Water	0.20 l	€ 4.50
Loona Lemonade	0.20 l	€ 2.10

#### Beers on draught

Beck's	0.30 l	€ 3.40
Haake-Beck Kräusen	0.30 l	€ 3.40
Franziskaner wheat beer	0.30 l	€ 3.40
Alster (beer and lemonade)	0.30 l	€ 3.30

#### Bottled beers

Beck's Gold	0.33 l	€ 3.30
Beck's Green Lemon	0.33 l	€ 3.30
Beck's Blue	0.33 l	€ 3.30
Beck's Pils	0.33 l	€ 3.30
Leffe Brune	0.33 l	€ 3.90
Franziskaner wheat beer, dark, crystal & non-alcoholic	0.50 l	€ 4.90
Vitamalz	0.33 l	€ 3.10

The ATLANTIC Wineworld offers a wide selection of wines from all over the world in all our hotels of the ATLANTIC Group.

In the Wineworld you will find wines by the glass and wines by the bottle.



## White wine

### Germany

Pinot blanc QbA	0.20 l	€ 6.50
Winery Karl Pfaffmann, Palatinate	0.75 l	€ 24.00
„Grohsartig“ QbA	0.20 l	€ 6.00
Winery Groh, Rhinehessen	0.75 l	€ 22.00
Pinot gris BIO QbA	0.20 l	€ 10.00
Winery Wittmann, Rhinehessen	0.75 l	€ 35.00
Riesling BIO QbA	0.20 l	€ 9.00
Winery Wittmann, Rhinehessen	0.75 l	€ 32.00
Pinot blanc QbA	0.75 l	€ 49.00
Winery Friedrich Becker, Palatinate & Alsace		

### Austria

Grüner Veltliner BIO D.A.C	0.20 l	€ 9.50
Winery Loimer, Kamptal	0.75 l	€ 34.00

### Italy

Chardonnay Simboli DOC	0.20 l	€ 7.00
Winery Cantina La Vis, Trentino	0.75 l	€ 26.00
Roero Arneis DOSCG	0.75 l	€ 52.00
Winery Bruno Giacosa, Piedmont		

### France

Sancerre Blanc Le Tournebride Bio, AOC	0.75 l	€ 52.00
Winery Vincent Gaudry, Sancerre		

**South Africa**

Kleine Rust	0.20 l	€ 6.50
Stellenrust Winery, Stellenbosch	0.75 l	€ 24.00

**New Zealand**

Sauvignon Blanc	0,75 l	€ 45,00
Winery Mount Nelson, Marlborough		

**Rosé****France**

Aix Rosé	0.20 l	€ 9.50
Winery Saint Aix, Provence, Aix	0.75 l	€ 34.00

**Red wine****Germany**

Pinot noir QbA	0.20 l	€ 8.00
Winery Karl Pfaffmann, Palatinate	0.75 l	€ 28.00
Ursprung	0.20 l	€ 10.00
Winery Markus Schneider, Palatinate	0.75 l	€ 35.00
Pinot Noir „B“, QbA	0.75 l	€ 48.00
Winery Friedrich Becker, Palatinate & Alsace		

**Italy**

Chianti Colli Senesi Farnetella	0.20 l	€ 9.00
Winery Felsina, Tuscany	0.75 l	€ 32.00
Langhe Nebbiolo Perbacco, DOCG	0.75 l	€ 48.00
Winery Vietti, Piedmont		

**France**

Château Les Rosiers	0.20 l	€ 7.00
Winery Les Rosiers, Bordeaux	0.75 l	€ 26.00
Saint-Émilion Grand Cru	0.75 l	€ 63.00
Winery Château Valade, Bordeaux, Saint-Émilion		

**Spain**

Altos Ibéricos Rioja DOCa	0,20 l	€ 8.00
Winery Miguel Torres, Rioja	0.75 l	€ 28.00
Lindes De Remelluri, DOCa	0.75 l	€ 41.00
Winery Bodegas Remelluri, Rioja Alavesa		

**Australia**

Stickleback Red	0.20 l	€ 8.00
Heartland Wines, Langhorne Creek	0.75 l	€ 28.00
Directors' Cut Shiraz	0.75 l	€ 61,00
Heartland Wines, Langhorne Creek		

**South Africa**

Jan Fiskaal Merlot	0.20 l	€ 5.50
MAN Family Wines, Coastal Region	0.75 l	€ 20.50

**Sparkling wine****Germany**

ATLANTIC Sparkling wine extra dry	0.75 l	€ 28.00
Schloss Affaltrach, Baden-Württemberg		

## EVENT PACKAGES

For your event, we can offer you the following standard package:

### **Beverage package**

- House white wine
- House red wine
- Beck's beer on tap
- Non-alcoholic drinks (Coca Cola, Fanta, Sprite, orange juice, apple juice, mineral water)
- Filter coffee

**€ 36.50 per person for 6 hours**

*(can be booked from 25 persons)*

## WEDDINGS

You are looking for a good location for the happiest day in your life?  
Celebrate your wedding at a height of 35 metres over Bremen!

Whether you intend to celebrate the event with just the family or with many guests – our bright and modern rooms on the 8th floor can be flexibly arranged and offer you the right setting for your wedding day with up to 150 guests.

### **On cloud nine – the package for your wedding**

- Reception with Prosecco or sparkling wine, Aperol, orange juice and mineral water
- Festive buffet
- Beverage package: White wine, red wine, beer on tap, Coca Cola, Fanta, Sprite, orange juice, apple juice and mineral water, vodka, Ramazotti and Havanna Club 3-year-old
- Drinks after the meal: Coffee and coffee specialities, and a selection of ALTHAUS teas
- White table covers, white cloth napkins, or optionally DUNI serviettes in a colour of your choice, and 3 menu cards per table
- Dance floor and background music during your meal
- A small gift for the happy couple
- Free overnight stay for the bridal couple in one of our suites (on request and depending on availability)

**€ 125.00 per person for 7 hours**

*(can be booked from 30 persons)*

## OFFERS

### Best views in the BLIXX restaurant



Hold an exclusive celebration with 80 to 110 guests in the BLIXX restaurant with its superb panoramic view over the runway of Bremen Airport!

For your celebratory event, we offer you our festive menus and buffets:

- Festive menus from € 32.50 per person
- Festive buffets from € 37.50 per person

Are you planning a celebration on a larger scale?

Our "Lilienthal" function room with a view of Bremen's skyline can accommodate up to 200 persons.

Enjoy your celebration with the unique vista at Bremen Airport.

Book your date by phoning 0421 5571-162 or mailing [veranstaltung.aha@atlantic-hotels.de](mailto:veranstaltung.aha@atlantic-hotels.de).







## FUNCTION ROOMS

In our 8 function rooms at an “altitude” of 35 metres, you will find the perfect settings for conferences and celebrations while the planes take off from the runway directly opposite.

### Room capacities

You can choose from rooms between 35 sqm and 350 sqm.

Whatever you may need for your conference, meeting or presentation, our Event Sales Team is happy to provide information on the availability, location, size, capacity and equipment of all the rooms.

	sqm	Maximum number of persons						Room dimensions		
								Length	Width	Height
Trans-Atlantik	54	30	20	14	24	20	30	7.20	7.60	3.00
Dornier	52	30	20	14	24	20	30	7.50	7.10	3.00
Armstrong	106	80	50	35	40	40	60	15.00	7.00	3.00
Pazific	54	30	20	14	24	20	30	7.20	7.60	3.00
Lindbergh	54	30	20	14	24	20	30	7.20	7.60	3.00
Junkers	52	30	20	14	24	20	30	7.20	7.60	3.00
Lilienthal	200	30	20	15	–	16	50	17.50	10.50	3.00
Pazific + Lindbergh	108	80	50	35	40	40	60	14.40	7.60	3.00
Lilienthal + Junkers	252	110	50	40	40	40	80	14.20	7.60	3.00
Junkers + Lindbergh + Pacific	160	200	90	–	70	60	90	21.60	7.60	3.00
Lilienthal + Junkers + Lindbergh	306	200	110	–	70	60	110	28.60	7.60	3.00
Lilienthal + Junkers + Lindbergh + Pazific	360	250	150	–	100	80	250	28.60	7.60	3.00
Fokker	35	–	–	–	–	8	–	7.00	5.00	2.70

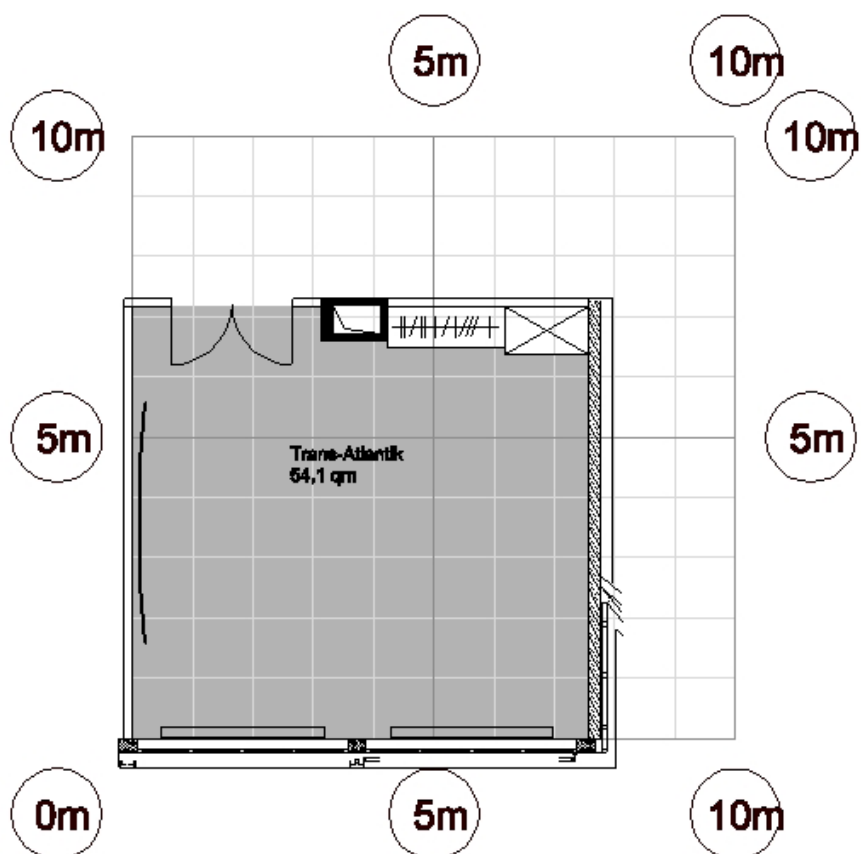
All function rooms (except for the “Fokker” room, fourth floor) are located on the eighth floor of the hotel.



## Visualizations

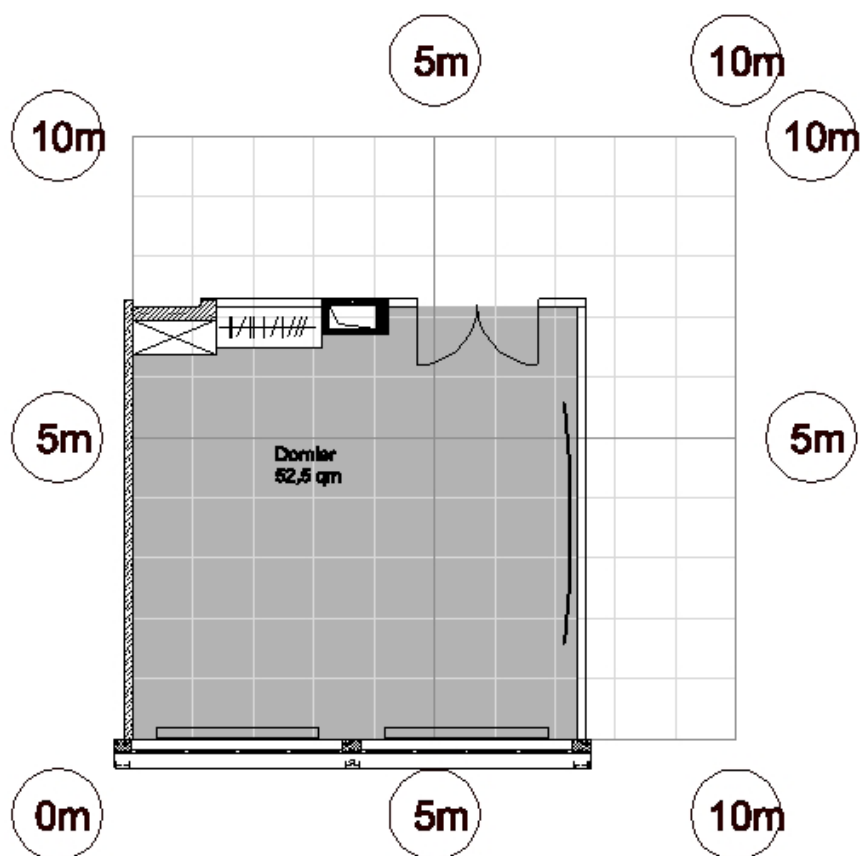
Here you can get an overview of the individual layout options of our function rooms:

### Trans-Atlantik



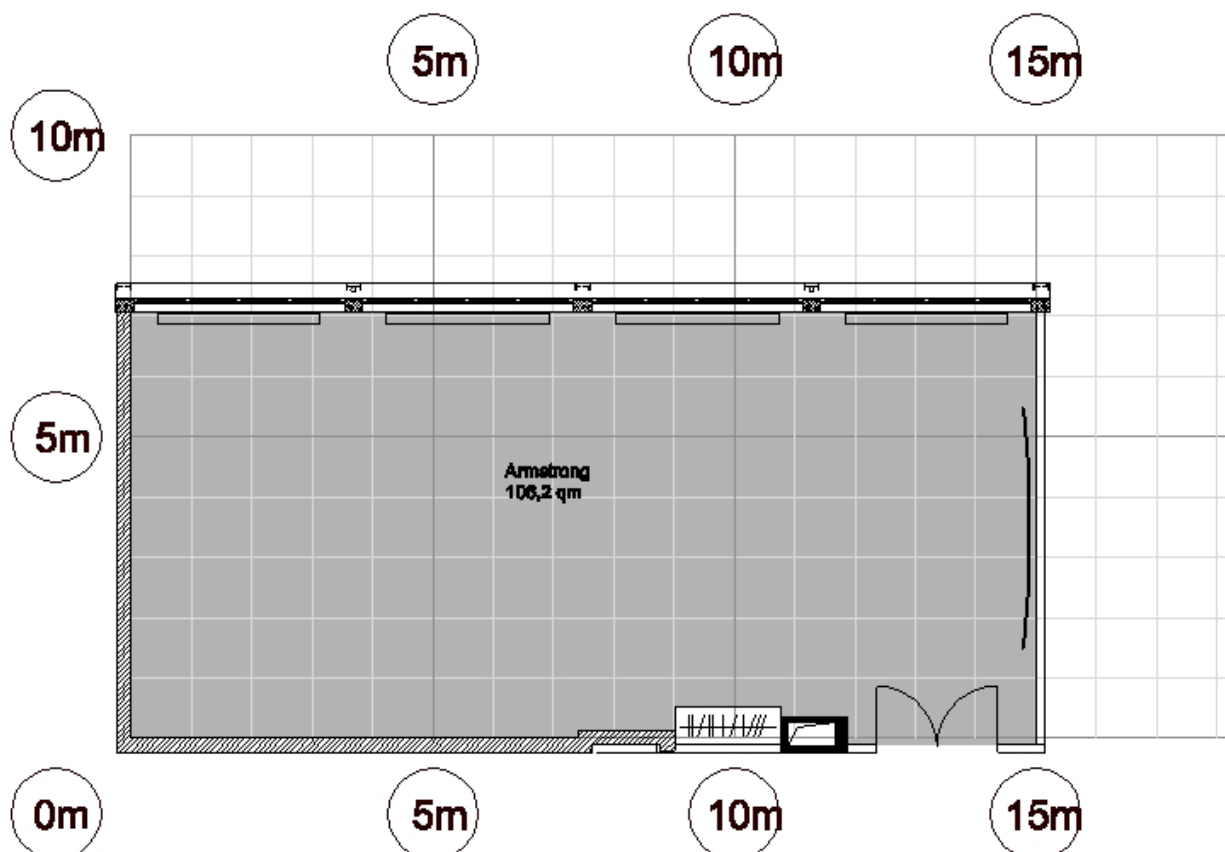
Daylight	✓
Air-conditioned	✓
To be darkened	✓
Accessible by car	-
Internet access	WLAN/LAN
Power connection	12 x 230 V
Projector	Mobile
TV connection	✓
Sound system	-
Floor covering	Carpet
Location in hotel	8th floor
Other features	Dimmable light

## Dornier



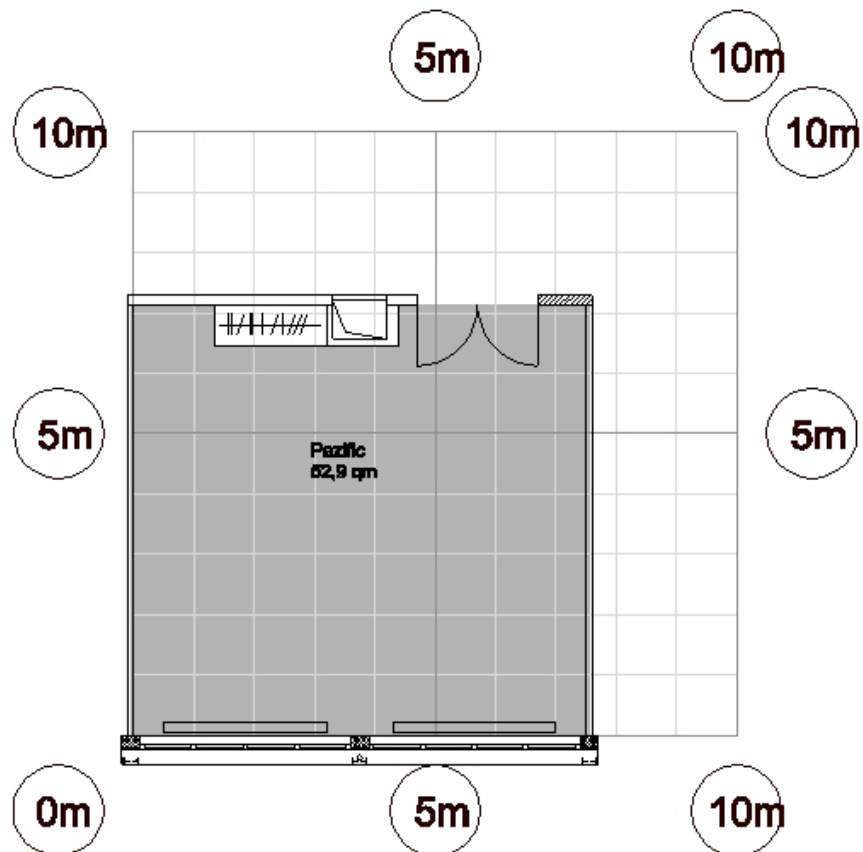
Daylight	✓
Air-conditioned	✓
To be darkened	✓
Accessible by car	-
Internet access	WLAN/LAN
Power connection	12 x 230 V
Projector	Mobile
TV connection	✓
Sound system	-
Floor covering	Carpet
Location in hotel	8th floor
Other features	Dimmable light

## Armstrong



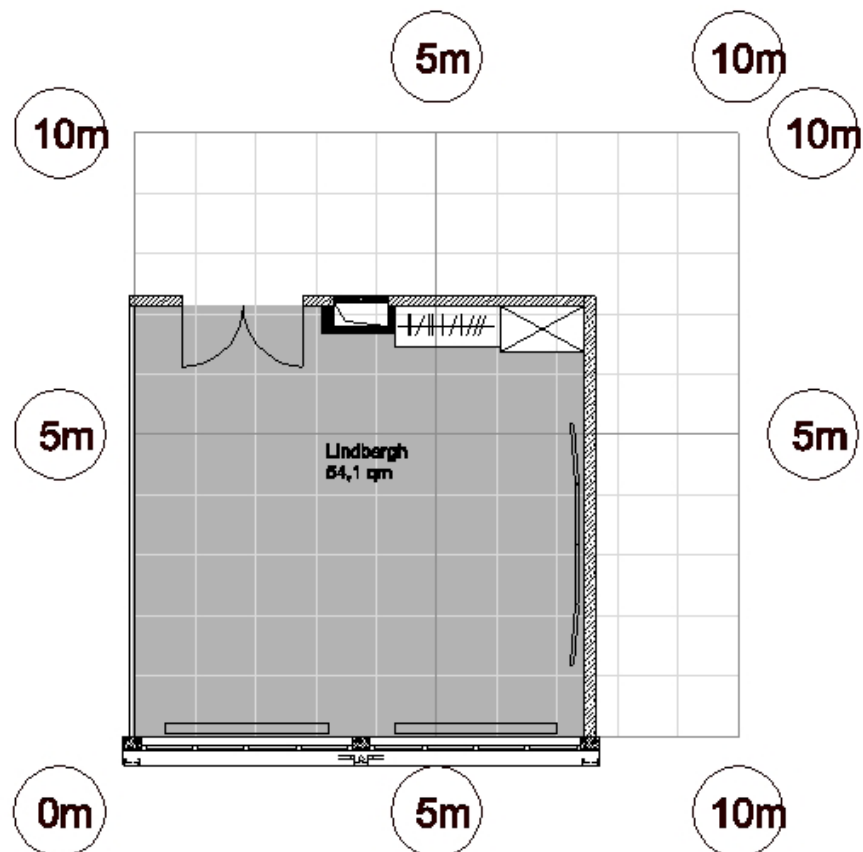
Daylight	✓
Air-conditioned	✓
To be darkened	✓
Accessible by car	-
Internet access	WLAN/LAN
Power connection	16 x 230 V
Projector	Mobile
TV connection	✓
Sound system	-
Floor covering	Carpet
Location in hotel	8th floor
Other features	Dimmable light

## Pazific



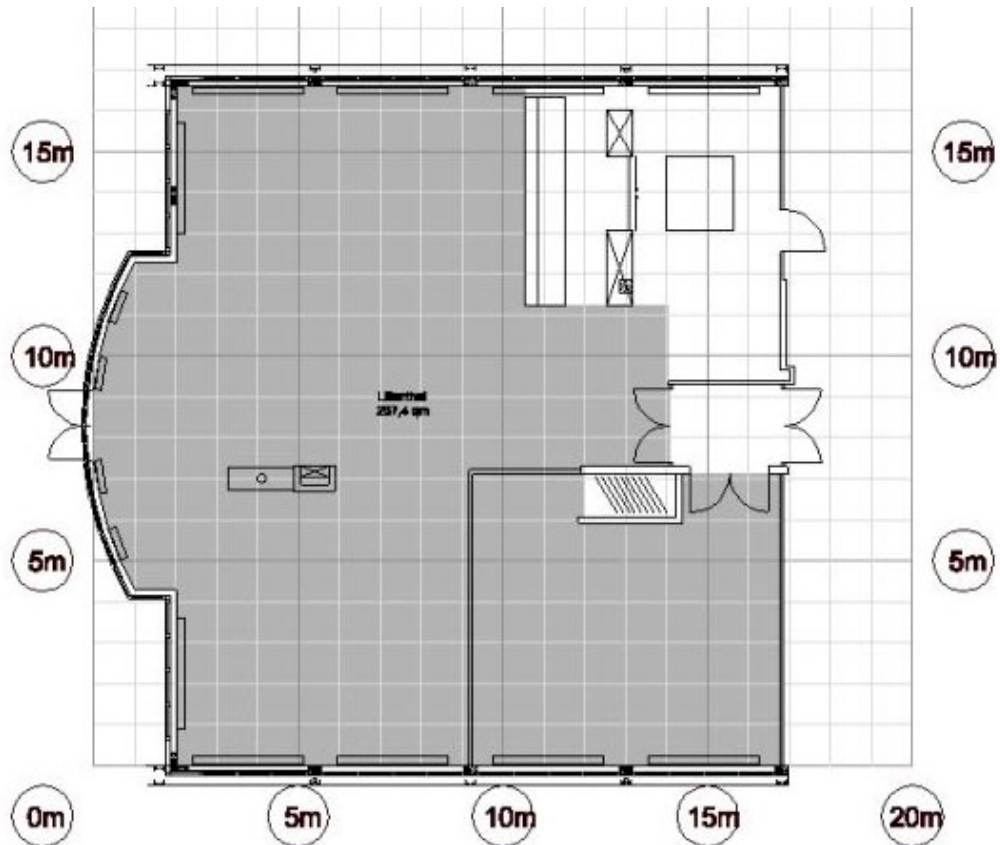
Daylight	✓
Air-conditioned	✓
To be darkened	✓
Accessible by car	-
Internet access	WLAN/LAN
Power connection	9 x 230 V
Projector	Mobile
TV connection	✓
Sound system	-
Floor covering	Carpet
Location in hotel	8th floor
Other features	Dimmable light

## Lindbergh



Daylight	✓
Air-conditioned	✓
To be darkened	✓
Accessible by car	-
Internet access	WLAN/LAN
Power connection	10 x 230 V
Projector	Mobile
TV connection	-
Sound system	-
Floor covering	Carpet
Location in hotel	8th floor
Other features	Dimmable light

## Lilienthal



Daylight	✓
Air-conditioned	✓
To be darkened	✓
Accessible by car	-
Internet access	WLAN/LAN
Power connection	28 x 230 V
Projector	Mobile
TV connection	✓
Sound system	-
Floor covering	Carpet
Location in hotel	8th floor
Other features	Dimmable light

## Junkers

Daylight	✓
Air-conditioned	✓
To be darkened	✓
Accessible by car	–
Internet access	WLAN/LAN
Power connection	13 x 230 V
Projector	Mobile
TV connection	–
Sound system	–
Floor covering	Carpet
Location in hotel	8th floor
Other features	Dimmable light

## Fokker

Daylight	✓
Air-conditioned	✓
To be darkened	✓
Accessible by car	–
Internet access	WLAN/LAN
Power connection	11 x 230 V
Projector	Mobile
TV connection	–
Sound system	–
Floor covering	Carpet
Location in hotel	4th floor
Other features	Dimmable light

## ROOM COSTS

### Clear and transparent

Transparency is one of the pillars of the ATLANTIC Hotels' SMART meetings & events concept. When you book a conference package, we charge a Set-up costs to cover power, seating and cleaning of the room. This fee depends on the size of the room, and not the accommodation and restaurant sales.

In addition to the fees for the Economy, Business and Business Plus conference packages, we charge a per-day preparation fee that depends on the size of the function room.

For the individual use of a room without a conference package, we charge a room rental fee that depends on the size of the room and duration of use.

	Room size in sqm	Package room rental in EUR	Individual room rental in EUR
Trans-Atlantik	54	200.00	from 250.00
Dornier	52	200.00	from 250.00
Armstrong	106	260.00	from 350.00
Pazific	54	200.00	from 250.00
Lindbergh	54	200.00	from 250.00
Junkers	52	200.00	from 250.00
Lilienthal	200	260.00	from 350.00
Pazific + Lindbergh	108	260.00	from 350.00
Lilienthal + Junkers	252	300.00	from 550.00
Junkers + Lindbergh + Pacific	160	360.00	from 450.00
Lilienthal + Junkers + Lindbergh	306	360.00	from 650.00
Lilienthal + Junkers + Lindbergh + Pazific	360	390.00	from 950.00
Fokker	35	200.00	from 200.00



## ACCOMPANYING PROGRAMMES

We can also organise fantastic leisure programmes for your event, such as a view behind the scenes of Bremen Airport. Draw inspiration from our recommendations – our Event Sales Team would be delighted to help you find the perfect incentive for your event.

### Airport team quiz



This competition gives you insider knowledge of aeronautics and spaceflight! In addition, indoor or outdoor games are offered, all with the airport theme. Will you be out in front with the paper aeroplane competition or the in-flight meal tasting?

*Duration: approx. 1.5–2 hours*

*Participants: 15–50 persons*

### Airport team challenge



This challenge really gets your team moving!

In the workflow simulator, the participants have to transport a rocket towards the take-off point. The contestants move through the obstacle course “flying blind” on rollboards. Here the pilot is guided by his air traffic controllers via radio. Does your team have what it takes to win?

### Tour of Bremen Airport



**AIRstounding insights!**

Bremen Airport offers exciting airport tours.

At 10:00 am on the 1st and 3rd Sunday of every month, you can take part in an open tour (prior registration required).

Special dates and times may be possible for groups.

*Duration: approx. 2 hours*

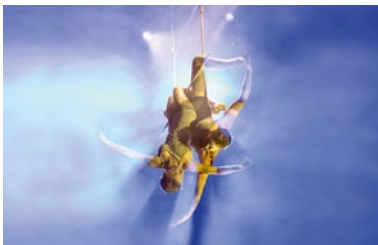
## Airbus space tour



Bremen is one of the most important aerospace locations in Europe! How do we get water and food to the astronauts? How do they live, sleep and perform research in conditions of weightlessness? You will find some fascinating answers in the Columbus replica. Have a look into the production area for the Ariane rockets that bring satellites into orbit. And how heavy is a litre of milk on the moon?

*Duration: approx. 2 hours*

## G.O.P. variety theatre



**Let me entertain you!**

Prepare to be enthralled by excellence: world-class artistes and entertainers will touch your heart and thrill your senses. The show programme and its international ensemble change every two months.

## Hafenrummel historical circuit



**The leisure attraction in the Überseestadt district!**

Play your way through a course of 11 stations reflecting the port flair of the 1950s – fun for all ages.

## PREFERRED PARTNERS

### External technology

HanseEvent GmbH  
Kongreß- & Medientechnik  
Solinger Straße 13  
28199 Bremen  
Tel. +49 421 5340015  
info@hanseevent.de



active blue  
Bauerland 19  
28259 Bremen  
Tel. +49 421 526286-0  
info@active-blue.com



### Florist

Floraldesign GmbH  
Schwachhauser Heerstraße 200  
28213 Bremen  
Tel. +49 421 3306466  
info@floraldesign-bremen.de



### Confectioner

Konditorei Jacobs  
Georg-Gröning-Straße 76  
28209 Bremen  
Tel. +49 421 341313  
info@konditoreijacobs.de



### Rental items

Party Rent Bremen  
Bernard & Roes GmbH  
Auf der Muggenburg 7-9  
28217 Bremen  
Tel. +49 421 4348368-0  
bremen@partyrent.com



### Photographer

Fotografie Antje Schimanke  
Schleusenstraße 24  
27568 Bremerhaven  
Tel. +49 471 3095247  
info@schimanke-fotografie.de



## ARRIVAL AND PARKING

### How to get here

#### By rail:

The combination offer between the ATLANTIC Hotels and Deutsche Bahn AG ensures a relaxed and comfortable trip for € 45.00 (one-way within Germany) to your event at the ATLANTIC Hotels.

By choosing to travel by rail, you help the environment and actively contribute to the fight against climate change.

From Bremen Central Station, you can reach us in 15 minutes by taking tram line 6 to the stop "Flughafen" (Airport).



#### By car:

When travelling by car, follow the signs for Bremen Airport from all directions. Then look out for departure terminal 3. The ATLANTIC Hotel Airport is situated directly at Bremen Airport, opposite the terminal building.

To get to the hotel's own basement car park and to the outside parking spaces, turn left after the hotel.

**A tip for navigation systems:** Enter "Maria-Cunitz-Strasse" as the destination address.

## CONTACTS

### In good hands

We support you from the idea right through to the implementation. It will be a pleasure to plan your event in our hotel together with you.



**Dana Ohde**  
Event Sales Manager  
Tel. +49 421 5571-162  
Email: [dohde@atlantic-hotels.de](mailto:dohde@atlantic-hotels.de)



**Katharina Kramer**  
Deputy Event Sales Manager  
Tel. +49 421 5571-178  
Email: [kkramer@atlantic-hotels.de](mailto:kkramer@atlantic-hotels.de)